

## Dinky toys

Excepting rare Fodens and 28 series Dinkys, the market remained very stable for Dinky Toys in 2003. If values are not rising, they are at least not falling significantly.

The name of Frank Hornby is legendary and will always be associated with the creation of Meccano. His inventive mind was to develop other toys, starting with the Hornby Trains which appeared in 1920.

To go with the 'O' gauge trains various accessories were launched in 1931 as 'Modelled Miniatures'. The first vehicles followed in late 1933. The brand name was not snappy enough and so 'Meccano Miniatures' was tried for a short time before 'Dinky Toys' was decided on in 1934.

For many years Dinky Toys remained largely unchallenged in the British market, really until the introduction of the Corgi range in 1956. Further new challengers appeared both at home and in export markets which combined to cause Meccano to lose ground and become vulnerable. This led to the takeover by Lines Bros, of Tri-ang fame, who in turn fell into financial difficulties. They went into liquidation and the Meccano name became part of Airfix. It was, however, too late, Airfix also went and the Binns Road, Liverpool, factory closed for good in 1979.

This was the end of Dinky Toys as most collectors know them. The name has been revived recently by the new owners, Matchbox and its subsequent owners, but the new models are not descendants of the 'traditional' Dinkies so loved by collectors.

In the listing that follows the colours given are either the only ones known to exist, or they are the more common ones. Sometimes rare colours are reported, but one must always be aware of re-decaled and repainted models. Many of these are very skillfully executed and can fool many an expert. The sudden appearance of a plethora of 'newly discovered' rare colours is a bit surprising when one considers the number of dedicated collectors who have been searching out old toy shops since the mid 1960s. Information has been regularly exchanged through magazine articles since 1962 and it is very difficult to understand how these allegedly mint rare models have managed to remain as well hidden as the Loch Ness monster.

Models produced in South Africa are listed as 'South African colours'. These are generally soft, pastel colours

and the boxes are printed in English and Afrikaans.

Care should also be taken when looking at the Triumph Herald and 2000 models produced in 'Triumph colours'. As they are standard factory colours they can be reproduced without too much difficulty by a skilled modeller.

No prices have been included for the South African or special Triumph models, so few are around that a realistic average price is not possible to calculate as auctions produce such a wide variation. These are marked A in the price column, in common with other rare items which are normally only available through auction.

The same remarks apply to rare colour variations on otherwise standard models. These models often fetch very high prices. It is the responsibility of the purchaser to assure himself that the items offered are genuine. This is where the term 'caveat emptor' (let the buyer beware) really has a meaning. Always try to obtain provenance for rare, high priced items and only buy from reputable sources.

Some of the late pre-war military vehicles were produced in camouflage.

There are various Gift Sets from the 1946 to 1948 era which were marketed in the USA by Hudson Dobson of New York. These are in green or blue flat boxes and are outside the normal UK production as they were special marketing deals. There seems to be six sets, but the contents have been known to differ.

Variations can sometimes be noted of decals or castings: such generally will fall within the price band quoted, although it could be a very rare variation. The best way to tell a pre-war model from a post-war version is to check the axles: 'thin' are pre-war, while 'thick' are post-war.

Many of the early Dinky Toys suffer from metal fatigue. Cracks from such fatigue will reduce the value of a model; bad cracks or parts missing will greatly reduce the value. It should be noted that some of the early castings were in fact of lead: this will enhance their value.

Except for some planes, most boxes sold to the public pre-war contained sets. Individual models were sold from retailers' boxes of six. It was not until around renumbering (1953/54) that all models were sold in individual boxes. Post-war individual figures from boxes of 6 or 12, or from bags, have very little value.

### Dinky Toys & Modelled Miniatures

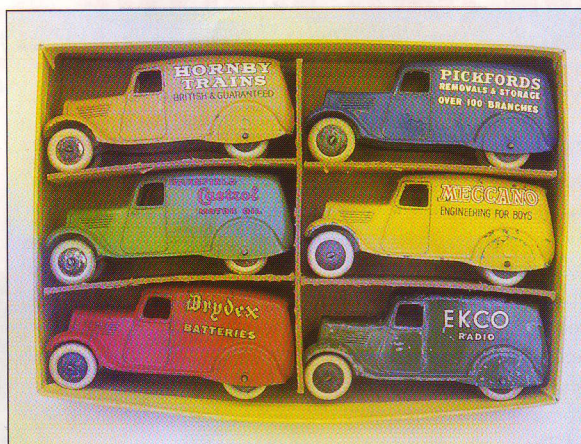
|     |                                   |        |
|-----|-----------------------------------|--------|
| 001 | Station Staff, R - see 1          | -      |
| 001 | Buick Riviera                     | -      |
| 001 | Space War Station, silver grey    | £15-20 |
| 002 | Farmyard Animals, R - see 2       | -      |
| 002 | Chevrolet Corvair Monza           | -      |
| 002 | Blazing Inferno, grey & flame     | £15-20 |
| 003 | Passengers, R - see 3             | -      |
| 003 | Chevrolet Impala                  | -      |
| 004 | Engineering Staff, R - see 4      | -      |
| 004 | Oldsmobile 88                     | -      |
| 005 | Train & Hotel Staff, R - see 5    | -      |
| 005 | Ford Thunderbird Coupé            | -      |
| 006 | Shepherd Set, R - see 6           | -      |
| 006 | Rambler Classic Wagon             | -      |
| 007 | Petrol Pump Attendants Set, white | £40-50 |

|     |   |        |
|-----|---|--------|
| 008 | Fire Station Personnel, blue              | £70-90 |
| 009 | Service Station Personnel, mainly white   | £70-90 |
| 010 | Road Maintenance Personnel                | £70-90 |
| 011 | Telegraph Messenger, R - see 12d          | -      |
| 012 | Postman, R - see 12e                      | -      |
| 013 | Cook's Man, R - see 13a                   | -      |
| 041 | Motorcyclist - Civilian                   | -      |
| 042 | Motorcyclist - Police                     | -      |
| 043 | Motor Cycle Patrol                        | -      |
| 040 | AA Motor Cycle patrol                     | -      |
| 050 | Railway Staff                             | £25-35 |
| 051 | Station Staff, R - see 1001               | -      |
| 052 | Railway Passengers, various colours       | £35-45 |
| 053 | Passengers, R - see 1003                  | -      |
| 054 | Railway Station Personnel various colours | £35-45 |

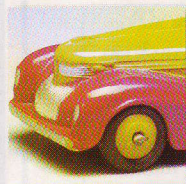
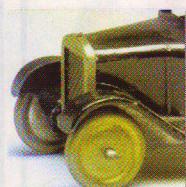


# Dinky toys

28 Series (Type 2)  
Delivery vans,  
unlike their  
predecessors,  
these do suffer  
from metal fatigue



|     |   |            |
|-----|---|------------|
| 061 | Ford Prefect fawn   | £65-80     |
| 062 | Singer Roadster dk yellow, red seats  | £90-110    |
| 063 | Commer Van, blue  | £45-55     |
| 064 | Austin Lorry, green   | £45-55     |
| 065 | Morris Pick-up, red   | £45-55     |
| 066 | Bedford Flat Truck, grey  | £55-65     |
| 067 | Austin Taxi, blue & cream   | £65-80     |
| 068 | Royal Mail Van, red   | £75-85     |
| 069 | Massey-Harris Ferguson Tractor blue   | £50-60     |
| 070 | AEC Mercury Tanker<br>'Shell BP', green cab, red tank,<br>'Shell BP'  | £85-100    |
| 071 | Volkswagen Delivery Van, yellow,<br>'Hornby Dublo'  | £60-70     |
| 072 | Bedford Articulated Flat Truck<br>yellow tractor, red trailer   | £60-65     |
| 073 | Land Rover, Trailer & Horse, green<br>Landrover, orange horsebox  | £75-85     |
| 076 | Lancing-Bagnal Tractor & Trailer<br>maroon, blue driver   | £60-75     |
| 078 | Lansing-Bagnal Trailer (only) maroon  | £25-30     |
| 1   | Station Staff, orange base  | £250-275   |
| 1   | Station Staff buff base, all painted<br>faces but 1940 less detailed clothes  | £175-200   |
| 1   | Station Staff, dark blue with fawn<br>base, also brown porter   | £100-130   |
| 1a  | Station Master, long coat dark blue   | £30-35     |
| 1a  | Station Master, long coat, dark blue  | £15-20     |
| 1b  | Guard, flag in left hand, dark blue   | £30-35     |
| 1b  | Guard, flag in right hand, dark blue  | £15-20     |
| 1c  | Ticket Collector, open arms dark blue   | £30-35     |
| 1c  | Ticket Collector, R arm out, dark blue  | £15-20     |
| 1d  | Driver, oil can in R hand, light blue   | £30-35     |
| 1d  | Driver, oil can in R hand, light blue   | £15-20     |
| 1e  | Porter with bags, one round dark blue   | £30-35     |
| 1e  | Porter with bags, two oblong dark blue  | £15-20     |
| 1f  | Porter walking dark blue  | £30-35     |
| 1f  | Porter standing dark blue   | £15-20     |
| 1   | Commercial Vehicles<br>25a, b, d, f, 29c  | £2000-2500 |
| 1   | Farmyard Equipment /<br>Farm Gear 27a, b, c, h, k, R 398  | £1000-1400 |
| 1   | Military Vehicles 621, 641, 674,<br>676 R 699   | £270-370   |
| 2   | Farmyard Animals (Set) various  | £250-300   |
| 2   | Farmyard Animals (Set) less detailed<br>painting: cows: 1 x brown, 1 x buff;<br>horses: 1 x brown, 1 x buff,<br>cream sheep, pink pig | £200-250   |



## Fact File

The original 28 Series vans are still gaining in value. This is in part because their body uses a lead alloy that does not suffer from metal fatigue.

|    |  |            |
|----|--|------------|
| 2a | Horse brown. white   | £20-25     |
| 2b | Cow brown. black & white   | £20-25     |
| 2c | Pig pink   | £15-20     |
| 2d | Sheep cream  | £15-20     |
| 2  | Private Automobiles<br>39a, b, c, d, e   | £2000-2500 |
| 2  | Commercial Vehicles<br>25m, 27d, 30n, 30p, 30s   | £1700-2000 |
| 3  | Passengers, cream base   | £250-275   |
| 3  | Passengers, buff base. all painted<br>faces but 1940 less detailed clothes                                     | £175-225   |
| 3  | Passengers as late pre-war but<br>painting also less detailed  | £80-100    |
| 3a | Woman & Child, child on R<br>green, red & yellow   | £30-35     |
| 3a | Woman & Child, child on L<br>(Mother & child) green  | £25-30     |
| 3b | Business man, L hand up dark blue  | £30-35     |
| 3b | Business man, L hand + case<br>brown, later grey   | £20-25     |
| 3c | Male Hiker, walking stick brown  | £30-35     |
| 3c | Male Hiker, no walking stick brown   | £20-25     |
| 3d | Female Hiker, white & blue   | £30-35     |
| 3d | Female Hiker, white & blue,<br>1940 all blue   | £20-25     |
| 3e | Newsboy, running brown   | £30-35     |
| 3e | Newsboy, standing blue   | £20-25     |
| 3f | Woman, oblong case, red & white  | £30-35     |
| 3f | Woman, round case red, later brown   | £20-25     |
| 3  | Private Automobiles 30d, 36a or<br>d, b, 38a, 39b or c   | £2000-2500 |
| 3  | Passenger Cars 27f, 30h, 40e,<br>g, h, 140b  | £1000-1500 |
| 4  | Engineering Staff cream base,<br>1 of each colour of 4b  | £250-275   |
| 4  | Engineering Staff buff base,<br>all painted faces but 1940 less<br>detailed clothes,<br>1 of each colour of 4b | £175-225   |
| 4  | Engineering Staff main colours as<br>pre-war, and less detailed  | £100-130   |
| 4a | Electrician white & blue   | £30-35     |
| 4a | Electrician blue   | £20-25     |
| 4b | Fitter dark blue until 1935 then<br>light blue, or brown, all with<br>white sleeves                            | £30-35     |
| 4b | Fitter white & light blue  | £20-25     |
| 4c | Storekeeper brown  | £30-35     |
| 4c | Storekeeper brown  | £20-25     |
| 4d | Greaser brown  | £30-35     |
| 4d | Greaser brown  | £20-25     |
| 4e | Engine Room Attendant light blue   | £30-35     |
| 4e | Engine Room Attendant light blue   | £20-25     |
| 4  | Commercial Vehicles 25d, 25f,<br>25w, 29c, 30e   | £1700-2000 |
| 4  | Racing Cars 23f, 23g, 23h, 23j, 23n,<br>R - see 249  | £900-1200  |
| 5  | Train & Hotel Staff cream base   | £250-275   |
| 5  | Train & Hotel Staff buff base,<br>all painted faces but 1940<br>less detailed                                  | £175-225   |
| 5  | Train & Hotel Staff main colours as<br>pre-war but paint less detailed   | £80-100    |
| 5a | Pullman Car Conductor white & blue   | £30-35     |
| 5a | Pullman Car Conductor (Dining Car  |            |



|     |   |            |
|-----|---|------------|
|     | Conductor) white & blue   | £20-25     |
| 5b  | Pullman Car Waiter white & blue   | £30-35     |
| 5b  | Pullman Car Waiter<br>(Dining Car Waiter) white & blue  | £20-25     |
| 5c  | Hotel Porter red jacket, blue & red<br>cases + 1 green with orange & red.<br>Cases initialled FH. 1940: red with<br>red & buff; green, green & buff.<br>No initials | £30-35     |
| 5c  | Hotel Porter  | £20-25     |
| 5   | Military Vehicles 151a, 151b, 152b,<br>153a, 161b   | £1700-2000 |
| 6   | Shepherd Set 3 x 2d sheep cream,<br>1 x 2d sheep black  | £225-275   |
| 6   | Shepherd Set 6a   | £225-275   |
| 6b  | Dog black, 4 x 2d sheep, cream  | £175-225   |
| 6a  | Shepherd dark brown hat, cream base   | £30-35     |
| 6b  | Dog black & white   | £20-25     |
| 6   | Commercial Vehicles<br>25h, 29b, 29c, 30e, 36f  | £1700-2000 |
| 12  | Postal Set 34b, 12a-e   | £700-850   |
| 12a | Pillar Box, GPO red, yellow oval<br>'Post Office' & arrow in red  | £30-35     |
| 12b | Pillar Box, Airmail blue, blue oval<br>'Air Mail' in white  | £40-45     |
| 12c | Telephone Box cream, later red  | £30-40     |
| 12c | Telephone Box red with silver<br>windows, R - see 750   | £25-30     |
| 12d | Telegraph Messenger, dark blue  | £20-25     |
| 12d | Telegraph Messenger, blue   | £20-25     |
| 12e | Postman, dark blue  | £20-25     |
| 12e | Postman, blue, brown bag  | £20-25     |
| 13  | Hall's Distemper Advertisement<br>white: 1 with blue brush,<br>1 with green   | £300-400   |
| 13a | Cook's Man, blue  | £25-30     |
| 14a | (BEV) Electric Truck, blue, grey,<br>dark blue, fawn driver, R 400  | £30-40     |
| 14c | Coventry Climax Fork Lift Truck<br>orange body, green forks R 401   | £40-50     |
| 15  | Railway Signals poles white with<br>black bases   | £150-200   |
| 15a | Single Arm Signal red (Home),<br>yellow (Distant)   | £35-40     |
| 15b | Double Arm Signal   | £40-50     |
| 15c | Junction Signal red (Home),<br>yellow (Distant)   | £70-80     |
| 16  | Streamlined Train Set silver with red,<br>orange, grey or blue, cream & red,<br>light blue with dark blue, R 798  | £225-275   |
| 16  | Express Passenger Train dark blue<br>& black loco, pale brown coaches,<br>green & black loco, red & cream<br>carriages, B.R. transfer                               | £100-150   |
| 17  | Passenger Train Set<br>17a, 17b, 20a, 20b   | £300-450   |
| 17a | Locomotive maroon or dark green<br>with black chassis   | £50-70     |
| 17b | Tender maroon or dark green to<br>match engine  | £30-40     |
| 18  | Tank Goods Train Set 21a, 3x21b   | £300-450   |
| 19  | Mixed Goods Train Set<br>21a, 21b, 21d, 21e   | £400-600   |
| 20  | Tank Passenger Train Set<br>21a, 2x20a, 20b   | £250-400   |

|     |  |                    |
|-----|--|--------------------|
| 20a | Coach brown with cream roof,<br>dark green with white  | £40-50             |
| 20b | Guard's Van brown with cream roof,<br>dark green with white  | £40-50             |
| 21  | Hornby Train Set 21 a-e in the<br>bright toy colours below   | £750-900           |
| 21a | Tank Locomotive red & blue marked<br>Hornby Series, maroon or dark<br>green with black chassis   | £50-70             |
| 21b | Wagon green with blue, red or black<br>chassis, maroon with black chassis  | £30-45             |
| 21c | Crane Wagon green with blue chassis  | £125-150           |
| 21d | Tank Wagon red or blue with<br>black chassis   | £30-45             |
| 21e | Lumber Wagon br log with bl chassis,<br>yellow log with red/ black chassis   | £30-45             |
| 22  | Motor Vehicles 22a - f   | £2500-3200         |
| 22a | Sports Car red with cream wings &<br>radiator, cream with red, yellow with<br>green, blue with red, blue with yellow,<br>cream with green, cream with blue   | £325-375           |
| 22b | Sports Coupé yellow with green<br>wings & roof, red with cream, red<br>with green, cream with blue   | £325-375           |
| 22c | Motor Truck blue cab with red back,<br>red with green, blue with cream,<br>yellow with blue  | £325-375           |
| 22c | Motor Truck red, green, blue,<br>cream with black wings  | £45-70             |
| 22c | Motor Truck i) red, green, brown<br>ii) olive drab   | £30-40<br>£200-250 |
| 22d | Delivery Van orange cab with blue<br>back, blue with yellow  | £325-375           |
| 22d | Delivery Van yellow with 'Meccano<br>Engineering for Boys' transfer,<br>some on orange with blue back  | £1300-1500         |
| 22e | Farm Tractor yellow with dark blue<br>wings (Hornby), green with yellow,<br>yellow with blue, red or cream with<br>blue or red, red with blue, blue with<br>cream; wheels usually red,<br>sometimes yellow | £200-250           |
| 22f | Army Tank green with orange turret,<br>yellow, (Hornby) grey, red then<br>green rubber tracks, also khaki  | £200-250           |
| 22g | Streamlined Tourer red, light or<br>dark blue, cream, green,<br>black, maroon  | £225-250           |
| 22h | Streamlined Saloon red, blue, cream  | £225-250           |
| 22s | Searchlight Lorry green  | £300-350           |
| 23  | Racing Car cream with orange, red,<br>blue or green flash, blue with<br>white, white with blue,  |                    |



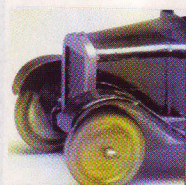
29h, the Duple  
Roadmaster  
coach.



# Dinky toys

|     |  |            |
|-----|--|------------|
|     | yellow with dark blue  | £150-190   |
| 23  | Racing Cars 23c, 23d, 23e  | £500-550   |
| 23a | Racing Car blue & white, brown & cream, orange & green, cream & orange   | £300-400   |
| 23a | Racing Car orange with green, yellow with dark blue, cream with red or green, red with cream, white with blue, blue with white     | £100-150   |
| 23a | Small Open Racing Car silver with red elongated diamond flash, red or blue with silver or cream, R 220                             | £40-50     |
| 23b | Hotchkiss Racing Car blue with dark blue, red or white flash, yellow with blue, orange with green, green with yellow, black number | £120-150   |
| 23b | Hotchkiss Racing Car silver with red flash, red with silver, black stencilled circles with number                                  | £40-60     |
| 23c | Mercedes-Benz Racing Car yellow, light or mid blue, green, red, some without racing numbers  | £100-120   |
| 23c | Large Open Racing Car silver, blue   | £40-60     |
| 23d | Auto-Union Racing Car red, green, yellow, light & mid blue, silver   | £100-120   |
| 23d | Auto-Union Racing Car red, silver, green, blue   | £60-80     |
| 23e | 'Speed of the Wind' Racing Car red, green, yellow, light & mid blue, silver  | £85-100    |
| 23e | 'Speed of the Wind' Record Car silver or red, R – see 221  | £50-60     |
| 23f | Alfa-Romeo Racing Car red, '8' in white, R – see 232   | £80-110    |
| 23g | Cooper-Bristol Racing Car green, '6' in white, R – see 233   | £80-110    |
| 23h | Ferrari Racing Car blue with yellow nose, from 1962 yellow triangle on nose, '5' later slightly raked in yellow, R – see 234       | £90-120    |
| 23j | HWM Racing Car light green, '7' in yellow, R – see 235   | £90-115    |
| 23k | Talbot Lago Racing Car blue, '4' in yellow, R – see 230  | £80-110    |
| 23m | 'Thunderbolt' Speed Car silver with black detail   | £180-200   |
| 23n | Maserati Racing Car red with white nose flash, '9' in white, R231  | £90-120    |
| 23p | Gardner's MG Record Car green with white flash, MG logo on nose, Union Jack on sides   | £180-230   |
| 23p | Gardner's MG Record Car green, no flash  | £80-100    |
| 23s | Streamlined Racing Car (pre-war) light green with dark green detail, light blue with dark blue                                     | £80-100    |
| 23s | Streamlined Racing Car (post-war) light, mid or dark green or dark blue with silver detail, silver with green, red or blue, R222   | £45-70     |
| 24  | Motor Cars 24a-h, there seems virtually no end to the colour variations; a pretty combination tends to enhance value               | £3500-4500 |
| 24a | Ambulance light grey body with dark grey chassis, then cream with grey   |            |

|     |   |            |
|-----|---|------------|
|     | or brown, then cream with red, all black (grey with red is 30f), also, early, yellow with black   | £275-375   |
| 24b | Limousine maroon body with maroon, grey or black chassis, blue with yellow, dark blue with black, brown with brown  | £275-325   |
| 24c | Town Sedan dark blue body with dark blue or black chassis, cream with dark blue or black, green with red, green with yellow   | £375-450   |
| 24d | Vogue Saloon blue body with blue, maroon or black chassis, cream with blue, brown or pink with green, green with black  | £275-325   |
| 24e | Super Streamlined Saloon maroon body with black chassis, red or green with dark red or black, green with red, green with blue   | £275-325   |
| 24f | Sportsman's Coupé blue body with black chassis, beige with brown, cream with dark blue, brown with buff, light blue with dark blue, blue with blue                    | £275-325   |
| 24g | Sports Tourer (4-seater) yellow or green body with black chassis, blue, cream or yellow with brown, royal blue with maroon, cream with black, red or cream with green | £300-350   |
| 24h | Sports Tourer (2-seater) red with red chassis, light green with dark green, yellow, red or green with green, yellow with blue, yellow, green or cream with black      | £300-350   |
| 25  | Commercial Motor Vehicles 25a-25f   | £2000-3000 |
| 25  | Commercial Motor Vehicles 25b,d,e,f,g,h   | £700-900   |
| 25a | Wagon (type 1) maroon, green, red or blue   | £130-160   |
| 25a | Wagon (type 2) maroon, green or blue, also orange, dark blue with orange chassis & blue hubs  | £100-120   |
| 25a | Wagon (type 3) grey, green, light blue or cream   | £60-80     |
| 25a | Wagon (type 4) grey, green, light blue or cream   | £60-80     |



## Fact File

505, the Dinky Foden (Type 1 cab) flatbed with chains in rare maroon sold in 2003 for £12,000 – a record price for a post war Dinky Toy.



129: MG Midget with original box.



|     |  |          |
|-----|--|----------|
| 25b | Covered Wagon (type 1) blue with cream tilt  | £130-160 |
| 25b | Covered Wagon (type 2) green with green tilt, fawn with cream, red with red, orange with green chassis & tilt                                  | £100-125 |
| 25b | Covered Wagon (type 2) Carter Paterson, Hornby or Meccano decals   | £350-450 |
| 25b | Covered Wagon (type 3) green with green or cream tilt, dark grey with light grey, blue with grey   | £100-120 |
| 25b | Covered Wagon (type 4) green with green or cream tilt, dark grey with light grey, cream with red tilt & wheels, yellow with blue tilt & wheels | £100-175 |
| 25b | Covered Wagon (type 4) olive drab including grille   | £250-300 |
| 25c | Flat Truck (type 1) dark blue  | £110-145 |
| 25c | Flat Truck (type 2) green, dark blue or stone  | £100-125 |
| 25c | Flat Truck (type 3) green, blue or grey  | £50-80   |
| 25c | Flat Truck (type 4) green, blue, orange or stone   | £70-90   |
| 25d | Petrol Tank Wagon (type 1) red, PETROL   | £275-325 |
| 25d | Petrol Tank Wagon (type 1) with advertising  | £300-400 |
| 25d | Petrol Tank Wagon (type 2) red, green, PETROL  | £110-145 |
| 25d | Petrol Tank Wagon (type 2) with advertising  | £300-400 |
| 25d | Petrol Tank Wagon (type 3) red, green or orange  | £80-110  |
| 25d | Petrol Tank Wagon (type 4) red, green or orange  | £80-110  |
| 25d | Petrol Tank Wagon (type 4) olive drab including grille   | £250-300 |
| 25e | Tipping Wagon (type 1) maroon cab with yellow back   | £120-150 |
| 25e | Tipping Wagon (type 2) maroon cab with yellow back, brown with turquoise, fawn with grey, also brown with turquoise on cream chassis           | £110-145 |
| 25e | Tipping Wagon (type 3) grey, stone, green or yellow  | £60-80   |
| 25e | Tipping Wagon (type 4) grey, stone, green, brown, yellow or blue with pink back  | £60-90   |
| 25f | Market Gardener's Van (type 1) green, yellow with green chassis  | £120-150 |
| 25f | Market Gardener's Van (type 2) yellow with green chassis or green with black   | £110-140 |
| 25f | Market Gardener's Van (type 3) green, yellow or orange   | £60-80   |
| 25f | Market Gardener's Van (type 4) green, yellow or orange   | £60-80   |
| 25g | Trailer dark blue or green   | £40-50   |
| 25g | Trailer stone, green, light blue, orange, from 1950 red or dark green  | £30-35   |
| 25h | Streamlined Fire Engine red, no baseplate, R250  | £140-190 |
| 25h | Streamlined Fire Engine red, with baseplate  | £110-140 |
| 25h | Streamlined Fire Engine olive drab   | £250-300 |



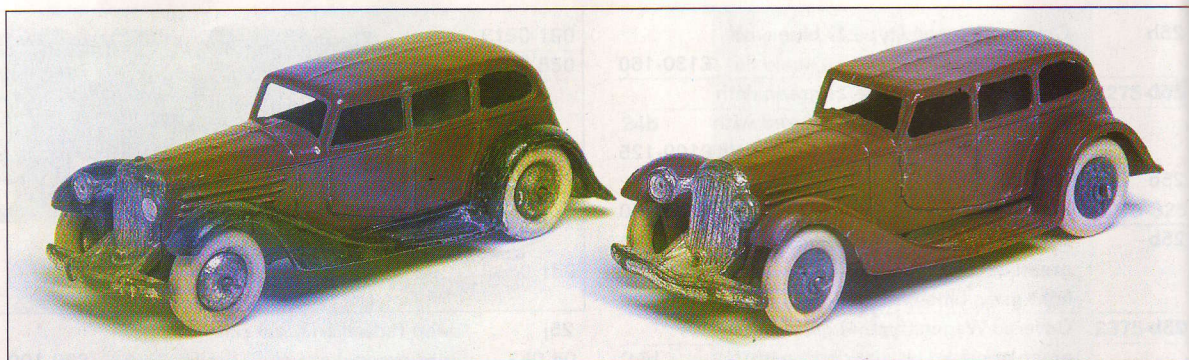
|      |  |          |
|------|--|----------|
| 25j  | Jeep (spare on rear) red, light green, light blue, brown   | £80-100  |
| 25k  | Streamlined Fire Engine with Firemen red   | £270-350 |
| 25m  | Bedford End Tipper without windows, R410   | £100-125 |
| 25m  | Bedford End Tipper with windows  | £170-200 |
| 25p  | Aveling-Barford Diesel Roller green, red rollers, R251   | £40-60   |
| 25r  | Leyland Forward Control Lorry red, green, cream, orange, R420  | £60-90   |
| 25s  | Six-wheeled Wagon, prewar brick red, dark blue, maroon   | £125-150 |
| 25s  | Six-wheeled Wagon, postwar brick red, green or dark blue all with grey tilt  | £80-95   |
| 25t  | Flat Truck and Trailer (type 3) truck & trailer both stone or green  | £100-140 |
| 25t  | Flat Truck and Trailer (type 4) truck & trailer both green, orange or blue   | £100-140 |
| 25v  | (Bedford) Refuse Wagon fawn with green shutters, R252  | £80-100  |
| 25v  | (Bedford) Refuse Wagon lime green with black shutters, orange cab, light grey back, green tin then plastic shutters  | £150-200 |
| 25w  | Bedford Truck light green, some darker, R411   | £90-120  |
| 25wm | Bedford Military Truck olive drab, R640  | £180-250 |
| 25x  | Commer Breakdown Lorry tan cab with green back, grey with blue, some brown with green, Dinky Service stencilled in black or white on sides, tan with blue, light blue letters, red with light grey, cream with light blue, dark blue letters, R430 | £90-125  |
| 25y  | Jeep (later Universal) green, red or orange, R405  | £90-130  |
| 26   | G.W.R. Railcar (early Rail Autocar) green, blue or yellow with a cream top, brown with cream, green with red, red with blue  | £110-150 |
| 27   | Tram Car blue with cream upper & lower windows & roof, later red, orange, turquoise, green, blue or yellow with cream upper windows & roof, later with 'Ovaltine' transfers  | £150-180 |
| 27a  | Massey-Harris Tractor red with yellow wheels & tan driver, from 1965 blue driver, from 1966 'Massey-Ferguson' transfer, R300   | £60-80   |
| 27ak | Farm Tractor and Hay Rake red & yellow, R310   | £150-200 |

945: AEC Fuel Tanker in Lucas promotional livery.



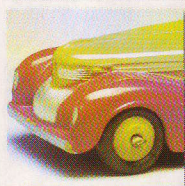
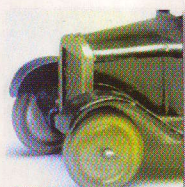
# Dinky toys

24 Series 24b  
Limousine,  
showing the  
different versions  
of the radiator  
grille.



|       |  |            |
|-------|--|------------|
| 27b   | Halesowen Harvest Trailer tan/red with red raves, red with yellow, R320  | £35-50     |
| 27c   | Massey-Harris Manure Spreader red, R321  | £30-40     |
| 27d   | Land Rover - R340 orange or green, blue, later red, with tan driver, from 1966 blue driver, Land Rover green with detail | £70-90     |
| 27f   | Estate Car fawn with brown panels, fawn with red panels or grey with red, R344   | £80-120    |
| 27g   | Moto-Cart - R342 light (some dark) green with brown rear, tan driver   | £50-80     |
| 27h   | Disc Harrow red & yellow to 1964, from 1966 white & red (to match 305), R322   | £15-20     |
| 27j   | Triple Gang Mower red, yellow & green, R323  | £25-30     |
| 27k   | Hay Rake red & yellow, R324  | £25-30     |
| 27m   | Land Rover Trailer orange, green or red, R341  | £20-25     |
| 27m   | Land Rover Trailer olive drab  | £180-200   |
| 27n   | Field Marshall Farm Tractor orange with silver wheels, later green wheels, R301  | £80-100    |
| 28/1  | Delivery Vans (Type 1) 28a, b, c, d, e (either), f (1934/5)  | £6000-8000 |
| 28/2  | Delivery Vans (Type 1) 28g, h, k, l, m, n (1934/5)   | £6000-8000 |
| 28/1  | Delivery Vans (Type 2 or 3) 28a, b, c, e, f, n (1934/5)  | £5000-7000 |
| 28/2  | Delivery Vans (Type 2 or 3) 28d, g, h, k, m, p (1935/41)   | £5000-7000 |
| 28/3  | Delivery Vans (Type 2 or 3) 28r, s, t, w, x, y (1935/41)   | £5000-7000 |
| 280/1 | Delivery Vans (Type 2 or 3) 280a, b, c, d, e, f (1937/41)  | £5000-7000 |
| 28a   | Hornby Trains Van (Type 1) yellow, some orange, 'Hornby Trains'  | £650-1000  |
| 28a   | Hornby Trains Van (Type 2) yellow, black hubs, 'Hornby Trains'   | £500-850   |
| 28a   | Golden Shred Van (Type 2) cream, black hubs, 'Silver Shred Marmalade'  | £500-850   |
| 28a   | Golden Shred Van (Type 3) cream, 'Silver Shred Marmalade'  | £500-850   |
| 28b   | Pickfords Removal Van (Type 1) dark blue, 'Pickfords Removal & Storage'  | £650-1000  |
| 28b   | Pickfords Removal Van (Type 2) dark blue, 'Pickfords Removal & Storage'  | £500-850   |
| 28b   | Seccotine Van (Type 2) light blue,   |            |

|     |  |           |
|-----|--|-----------|
|     | 'Seccotine Sticks Everything'  | £500-850  |
| 28b | Seccotine Van (Type 3) light blue, 'Seccotine Sticks Everything'                   | £500-850  |
| 28c | Manchester Guardian Van (Type 1) black with red back 'Manchester Guardian'         | £650-1000 |
| 28c | Manchester Guardian Van (Type 2) red, 'Manchester Guardian'                        | £500-850  |
| 28c | Manchester Guardian Van (Type 3) red, 'Manchester Guardian'                        | £500-850  |
| 28d | Oxo Van (Type 1) blue, 'Oxo Beef At Its Best' 'Oxo Beef In Brief'                  | £650-1000 |
| 28d | Oxo Van (Type 2) blue, 'Oxo Beef At Its Best' 'Oxo Beef In Brief'                  | £500-850  |
| 28d | Oxo Van (Type 3) blue, 'Oxo Beef At Its Best' 'Oxo Beef In Brief'                  | £500-850  |
| 28e | Ensign Cameras Van (Type 1) orange, 'Ensign Lukos Films'                           | £650-1000 |
| 28e | Firestone Tyres Van (Type 1) white, 'Firestone Tyres'                              | £650-1000 |
| 28e | Firestone Tyres Van (Type 2) white, 'Firestone Tyres'                              | £500-850  |
| 28e | Firestone Tyres Van (Type 3) blue, 'Firestone Tyres'                               | £500-850  |
| 28f | Palethorpe's Sausages Van (Type 1) grey, 'Palethorpe's Royal Cambridge'            | £650-1000 |
| 28f | Palethorpe's Sausages Van (Type 2) grey, blue hubs, 'Palethorpe's Royal Cambridge' | £500-850  |
| 28f | Virol Van (Type 2) yellow, 'Virol'   | £500-850  |
| 28f | Virol Van (Type 3) yellow, 'Virol'   | £500-850  |
| 28g | Kodak Cameras Van (Type 1) yellow, 'Kodak Film'                                    | £650-1000 |
| 28g | Kodak Cameras Van (Type 2) yellow, 'Kodak Film'                                    | £500-850  |
| 28g | Kodak Cameras Van (Type 3) yellow, 'Kodak Film'                                    | £500-850  |
| 28h | Sharp's Toffee Van (Type 1) black cab, red back, 'Sharp's Toffee'                  | £650-1000 |
| 28h | Sharp's Toffee Van (Type 2) red, 'Sharp's Toffee'                                  | £500-850  |
| 28h | Dunlop Van (Type 2) red, 'Dunlop Tyres'  | £500-850  |
| 28h | Dunlop Van (Type 3) red, 'Dunlop Tyres'  | £500-850  |
| 28k | Marsh and Baxter's Van (Type 1) green, 'Marsh's Sausages'                          | £650-1000 |
| 28k | Marsh and Baxter's Van (Type 2) green, 'Marsh's Sausages'                          | £500-850  |
| 28k | Marsh and Baxter's Van (Type 3) green, 'Marsh's Sausages'                          | £500-850  |
| 28l | Crawford's Biscuits Van (Type 1)   |           |



## Fact File

In recent years a number of Bantalls 28 Type 2 delivery vans have crept out of attics; though it still retains an almost legendary appeal.



|      |  |            |
|------|--|------------|
|      | red, 'Crawford's Biscuits'                                       | £650-1000  |
| 28m  | Wakefield's Oil Van (Type 1)<br>green, 'Wakefield Castrol'       | £650-1000  |
| 28m  | Wakefield's Oil Van (Type 2)<br>green, 'Wakefield Castrol'       | £500-850   |
| 28m  | Wakefield's Oil Van (Type 3) green,<br>'Wakefield Castrol'       | £500-850   |
| 28n  | Meccano Van (Type 1)<br>yellow, 'Meccano Engineering'            | £650-1000  |
| 28n  | Meccano Van (Type 2)<br>yellow, 'Meccano Engineering'            | £500-850   |
| 28n  | Atco Van (Type 2)<br>green, 'Atco Lawnmowers'                    | £500-850   |
| 28n  | Atco Van (Type 3) green,<br>'Atco Lawnmowers'                    | £500-850   |
| 28p  | Crawford's Biscuits Van (Type 2)<br>red, 'Crawford's Biscuits'   | £500-850   |
| 28p  | Crawford's Biscuits Van (Type 3)<br>red, 'Crawford's Biscuits'   | £500-850   |
| 28r  | Swan's Pens Van (Type 2) black,<br>'Swans Pens'                  | £500-850   |
| 28r  | Swan's Pens Van (Type 3) black,<br>'Swans Pens'                  | £500-850   |
| 28s  | Fry's Van (Type 2) dark brown,<br>'Fry's Chocolate'              | £500-850   |
| 28s  | Fry's Van (Type 3) dark brown,<br>'Fry's Chocolate'              | £500-850   |
| 28t  | Ovaltine Van (Type 2) red,<br>'Drink Ovaltine'                   | £500-850   |
| 28t  | Ovaltine Van (Type 3) red,<br>'Drink Ovaltine'                   | £500-850   |
| 28w  | Osram Van (Type 2) yellow,<br>'Osram Lamps'                      | £500-850   |
| 28w  | Osram Van (Type 3) yellow,<br>'Osram Lamps'                      | £500-850   |
| 28x  | Hovis Van (Type 2) white,<br>'Hovis For Tea'                     | £500-850   |
| 28x  | Hovis Van (Type 3) white,<br>'Hovis For Tea'                     | £500-850   |
| 28y  | Exide and Drydex Van (Type 2) red,<br>'Exide Batteries'          | £500-850   |
| 28y  | Van (Type 3) red, 'Exide Batteries'                              | £500-850   |
| 28*1 | Bentalls Van (Type 2) green with<br>cream, 'Bentalls'            | £2500-4500 |
| 28*2 | Fenwicks Van (Type 2) green with<br>cream, 'Fenwicks'            | £3000-5000 |
| 28*3 | Maison de Bonneterie Van (Type 2)<br>red, 'Maison de Bonneterie' | £3000-5000 |
| 28*4 | De Bijenkorf Van (Type 2)<br>chocolate brown, 'De Bijenkorf'     | £3000-5000 |
| 28*5 | H G Loose Van (Type 2)   |            |



236 Talbot Talgo in bubble pack packaging.

|      |  |            |
|------|--|------------|
|      | green with cream, 'H G Loose'  | £3000-5000 |
| 28   | Delivery Van (Postwar)<br>(Type 3) red, blue   | £60-75     |
| 280a | Viyella Van (Type 2) light blue,<br>'Vyella'   | £500-850   |
| 280a | Viyella Van (Type 3)<br>light blue, 'Vyella'   | £500-850   |
| 280b | Lyons' Van (Type 2)<br>dark blue, 'Lyons' Tea'   | £500-850   |
| 280b | Hartley's Van (Type 2)<br>cream, 'Hartley's'   | £500-850   |
| 280b | Hartley's Van (Type 3)<br>cream, 'Hartley's'   | £500-850   |
| 280c | Shredded Wheat Van (Type 2)<br>cream, 'Shredded Wheat'   | £500-850   |
| 280c | Shredded Wheat Van (Type 3)<br>cream, 'Shredded Wheat'   | £500-850   |
| 280d | Bisto Van (Type 2)<br>yellow, 'Ah! Bisto'  | £500-850   |
| 280d | Bisto Van (Type 3)<br>yellow, 'Bisto'  | £500-850   |
| 280e | Ekco Van (Type 2)<br>green, 'Ekco Radio'   | £500-850   |
| 280e | Yorkshire Evening Post Van (Type 2)<br>cream, 'Yorkshire Evening Post'   | £500-850   |
| 280e | Yorkshire Evening Post Van (Type 3)<br>cream, 'Yorkshire Evening Post'   | £500-850   |
| 280f | Mackintosh's Van (Type 2)<br>red, 'Mackintosh's Toffee' in gold  | £500-850   |
| 280f | Mackintosh's Van (Type 3)<br>red, 'Mackintosh's Toffee' in gold  | £500-850   |
| 29   | Motor Bus (Centre Entrance Bus)<br>red, maroon, light blue, dark blue<br>or green with cream roof, yellow<br>with silver, later with 'Marmite'<br>transfers  | £200-225   |
| 29a  | Motor Bus (Centre Entrance Bus) R29  | -          |
| 29b  | Streamlined Motor Bus green,<br>orange, red, light blue all with cream<br>above lower window line & down<br>the tail   | £180-220   |
| 29b  | Streamlined Motor Bus blue with<br>dark blue flash down roof to tail &<br>on spats, green with dark green,<br>yellow with orange<br>or red with maroon   | £100-150   |
| 29b  | Streamline Bus (postwar) light<br>green with dark green spats, grey<br>with blue, grey with red  | £60-70     |
| 29c  | Double Deck Motor Bus dark or light<br>blue, red, maroon, dark or light green<br>or orange with cream upper & grey<br>roof, later no grey roof, usually with<br>'Dunlop Tyres' transfers, R290/291 | £250-500   |
| 29c  | Double Deck Bus dark green with<br>light green upper, red or green<br>with cream or grey   | £125-150   |
| 29c  | Double Deck Bus red or green<br>lower, cream upper, after 1954 with<br>'Dunlop The World's Master Tyre'<br>transfer, from 1959, occasionally<br>'Exide' transfers from 291                         | £85-120    |
| 29e  | Single Deck Bus green with dark<br>green flash or blue with dark blue,<br>cream with blue  | £80-120    |



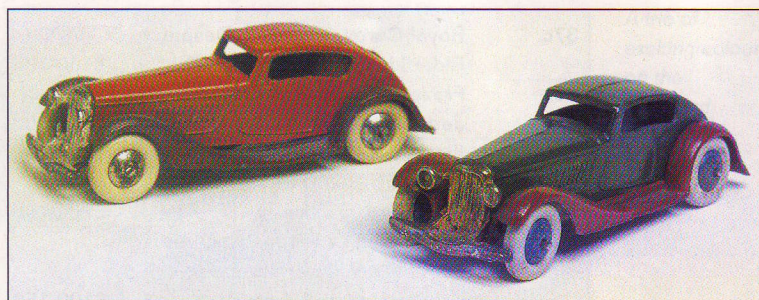
# Dinky toys

|     |   |            |      |   |          |
|-----|---|------------|------|---|----------|
| 29f | Observation Coach grey with red flash, cream with red, R280   | £80-100    | 30g  | grey or cream with black chassis  | £90-120  |
| 29g | Luxury Coach blue or maroon with cream flash or cream or fawn with orange, R281   | £80-100    | 30h  | Caravan Trailer blue, green, red, brown or orange with cream upper, red with grey, dark green with light green  | £100-130 |
| 29h | Duple Roadmaster Leyland Royal Tiger red or dark blue, all with with silver flashes, R282   | £80-100    | 30hm | Daimler Ambulance cream, white, R253  | £60-90   |
| 29h | Duple Roadmaster Leyland Royal Tiger yellow with red flash, green lower with cream upper  | £150-200   | 30j  | Daimler Military Ambulance olive drab, R624   | £140-160 |
| 30  | Motor Vehicles 30a-f (1935/37)  | £3500-4500 | 30j  | Austin Wagon yellow or light blue with yellow hubs, also light yellow with green, R412  | £250-30  |
| 30  | Motor Vehicles 30a, b, c, d, e, g (1937/41)   | £3500-4500 | 30j  | Austin Wagon blue, maroon, brown  | £80-100  |
| 30a | Chrysler 'Airflow' (prewar) maroon, green, blue or turquoise  | £275-425   | 30m  | Dodge Rear Tipping Wagon orange cab & chassis with light green back, dark or light blue with grey, R414   | £80-100  |
| 30a | Chrysler 'Airflow' (postwar) green, blue or cream   | £90-120    | 30n  | Farm Produce Wagon green cab & chassis, some light green, with yellow back, yellow with green, red with blue, R343  | £80-100  |
| 30b | Rolls Royce Car (prewar) yellow with brown chassis, cream, light blue, fawn, also black, with black chassis, red with dark red, grey or green chassis | £225-325   | 30p  | Petrol Tanker red or green with black 'Petrol' stamp  | £60-80   |
| 30b | Rolls Royce Car (postwar) fawn, grey-blue or dark blue with black chassis   | £100-130   | 30p  | Petrol Tanker 'Mobilgas' red, 'Mobilgas', R440  | £110-140 |
| 30c | Daimler Car (prewar) cream, blue, yellow or turquoise with black chassis, pink or red with dark red chassis, mid green with dark green chassis        | £225-325   | 30pa | Petrol Tanker 'Castrol' green, 'Castrol', R441  | £140-160 |
| 30c | Daimler Car (postwar) fawn, cream or dark green with black chassis  | £100-130   | 30pb | Petrol Tanker 'Esso' red, 'Esso', R441  | £110-140 |
| 30d | Vauxhall Car (prewar) green with dark green or black chassis, cream or yellow with brown, light grey with dark grey                                   | £225-325   | 30r  | Fordson Thames Flat Truck red or dark green, also reddish brown, R442   | £80-100  |
| 30d | Vauxhall Car (postwar) shades of dark green or brown with black chassis   | £100-130   | 30s  | Austin Covered Wagon dark blue with blue or cream tilt, maroon with cream, maroon with red, red with grey, R413   | £120-140 |
| 30e | Breakdown Car (truck) (prewar) red, yellow, green, brown or grey with black wings, blue with dark blue  | £90-110    | 30sm | Austin Covered Wagon (Military) olive drab, R625  | £220-270 |
| 30e | Breakdown Car (truck) (postwar) grey, green or red  | £50-70     | 30v  | Electric Dairy Van cream with red bed, 'Express Dairy' transfer in red, grey with blue bed 'Express Dairy' in blue, grey with blue bed, 'NCB' in blue, R491 | £75-100  |
| 30f | Ambulance (prewar) grey with red chassis only   | £180-225   | 30v* | Job's Dairy Van cream with red bed, with 'Job's Dairy' in red   | £100-120 |
| 30f | Ambulance (postwar)   |            | 30w  | Hindle-Smart Electric Articulated Lorry maroon, 'British Railways' transfer on front, R421  | £70-90   |
|     |   |            | 31   | Holland Coachcraft Van red, green, dark blue, cream or orange with  |          |



726: Dinky was exploring the historical aviation market long before Aviation Archive!





24e  
streamlined  
saloons are  
stylish and  
nostalgic.

|      |  |           |
|------|--|-----------|
|      | 'Holland Coachcraft' transfer  | £350-550  |
| 31a  | Trojan 15cwt Van:<br>Esso red, 'Esso', R450  | £110-150  |
| 31b  | Trojan 15cwt Van:<br>Dunlop red, 'Dunlop', R451  | £110-150  |
| 31c  | Trojan 15cwt Van: Chivers green,<br>'Chivers Jellies', R452  | £110-150  |
| 31d  | Trojan 15cwt Van: 'Oxo' blue,<br>'OXO', R453   | £200-235  |
| 32   | Chrysler Airflow Saloon R30a   | -         |
| 33   | Mechanical Horse and Five Assorted<br>Trailers 33a-f (1935/37)   | £800-1000 |
| 33   | Mechanical Horse and Four Assorted<br>Trailers 33a, b, c, e, f (1937/40)   | £650-800  |
| 33a  | Mechanical Horse red, green,<br>blue or yellow   | £25-45    |
| 33b  | Flat Truck red, green, blue or yellow  | £70-90    |
| 33c  | Open Wagon red, green,<br>blue or yellow   | £25-35    |
| 33d  | Box Van green, no transfer   | £150-170  |
| 33d  | Box Van green or blue,<br>with advertising   | £250-300  |
| 33e  | Dust Wagon blue or yellow with<br>light blue or yellow insert or<br>grey with green  | £95-110   |
| 33f  | Petrol Tank with or without<br>advertising (Castrol or Esso)   | £250-350  |
| 33R  | Railway Mechanical Horse and<br>Trailer Van maroon and black, LMS  | £300-360  |
| 33R  | Railway Mechanical Horse and<br>Trailer Van green and black,<br>'Southern Railway'   | £300-360  |
| 33R  | Railway Mechanical Horse and<br>Trailer Van blue and black, 'L.N.E.R.'   | £300-360  |
| 33R  | Railway Mechanical Horse and<br>Trailer Van brown and cream, 'G.W.R.'  | £300-360  |
| 33Ra | Railway Mechanical Horse as 33r  | £60-70    |
| 33Rd | Railway Trailer Van as 33r   | £200-250  |
| 33w  | Mechanical Horse and Open Wagon<br>various colours, R415   | £70-90    |
| 34a  | Royal Air Mail Service Car blue,<br>Air Mail transfer on doors   | £250-300  |
| 34b  | Royal Mail Van (prewar)<br>red with black roof, bonnet & wings   | £120-150  |
| 34b  | Royal Mail Van (postwar)<br>as prewar, later without black roof  | £80-120   |
| 34c  | Loud-speaker Van<br>blue, green or brown, R492   | £70-100   |
| 35   | Small Cars 35a, b, c   | £450-600  |
| 35a  | Saloon Car (prewar) grey, dark blue,<br>blue, red, maroon, turquoise,<br>some with darker shade on spare<br>wheel cover            | £125-150  |
| 35a  | Saloon Car (postwar) grey or blue  | £50-70    |
| 35b  | Racer (prewar) red or silver, some<br>dark blue, yellow or dark green  | £110-140  |
| 35b  | Racer later Midget Car Racer red,<br>silver, R200  | £50-65    |
| 35c  | MG Sports Car (prewar) red, light<br>or dark green, light or dark blue,<br>maroon, also yellow ochre,<br>all with silver detailing | £110-140  |
| 35c  | MG Sports Car (postwar)<br>red or green, silver radiator only  | £60-80    |
| 35d  | Austin 7 Car blue, yellow, green,  |           |

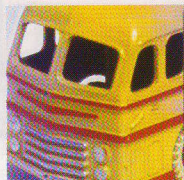
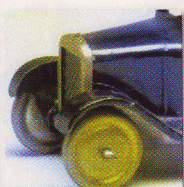
|     |  |            |
|-----|--|------------|
|     | maroon, grey or fawn<br>(some duotone)   | £100-140   |
| 35d | Midget Tourer blue, orange, brown,<br>yellow or fawn   | £65-90     |
| 36  | Motor Cars (with Driver, Passengers)<br>36a-f: body & chassis usually<br>different colours, postwar:<br>chassis always black   | £2500-3000 |
| 36a | Armstrong Siddeley, Driver and<br>Footman dark red or grey, also<br>maroon with maroon chassis   | £400-550   |
| 36a | Armstrong Siddeley blue, grey or<br>dark blue  | £90-125    |
| 36b | Bentley (2-Seater Sports) cream<br>with black chassis, yellow with<br>maroon, light grey with dark grey,<br>green with green   | £400-550   |
| 36b | Bentley green, blue, dark green or<br>dark blue  | £90-125    |
| 36c | Humber (Saloon), Driver and<br>Footman light green with dark green<br>chassis, light blue with dark blue,<br>royal blue  | £400-550   |
| 36c | Humber Vogue brown or grey   | £90-125    |
| 36d | Rover (Streamlined), Driver and<br>Passenger green with dark green<br>chassis, red with dark red   | £400-550   |
| 36d | Rover green, blue, dark blue or red  | £90-125    |
| 36e | British Salmson (2-Seater Sports),<br>driver royal blue with black chassis,<br>black with red, light grey with dark<br>grey, dark yellow with brown,<br>turquoise with dark blue | £400-550   |
| 36e | British Salmson 2-Seater Sports<br>red, blue, green or brown   | £110-140   |
| 36f | British Salmson (4-Seater Sports),<br>Driver red with dark red chassis,<br>green with dark green   | £400-550   |
| 36f | British Salmson 4-seater Sports<br>green, grey, fawn or brown  | £110-140   |
| 36g | Taxi with Driver (prewar)<br>grey, yellow, red, dark blue or green   | £350-550   |
| 36g | Taxi with Driver (postwar)<br>green, dark blue, red or maroon  | £90-120    |
| 37a | Motor Cyclist - Civilian blue, green,<br>maroon, red or black rider on<br>black cycle with silver exhaust  | £30-40     |
| 37a | Motor Cyclist - Civilian green,<br>gloss green or grey rider, black cycle  | £25-30     |
| 37b | Motor Cyclist - Police blue rider<br>with chinstrap, black cycle with silver<br>engine & exhaust   | £30-40     |
| 37b | Motor Cyclist - Police blue rider,<br>black cycle  | £20-30     |
| 37b | Motor Cyclist - Police olive drab  | £100-125   |



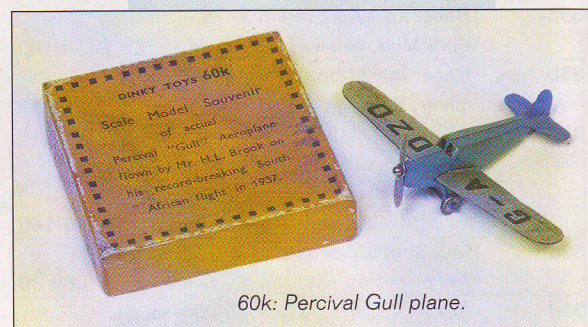
# Dinky toys

Dinky Toys

|      |   |            |
|------|---|------------|
| 37c  | Royal Corps of Signals Despatch Rider khaki rider, green cycle                    | £100-130   |
| 38a  | Frazer-Nash B.M.W. Sports Car red, dark blue                                      | £150-200   |
| 38a  | Frazer-Nash (postwar) blue, grey  | £100-130   |
| 38b  | Sunbeam-Talbot Sports Car red, royal blue, maroon                                 | £150-200   |
| 38b  | Sunbeam-Talbot (postwar) red, dark blue, yellow, maroon, light green, grey, brown | £100-150   |
| 38c  | Lagonda (Tourer) green, maroon or grey  | £100-130   |
| 38d  | Alvis Sports Tourer green, maroon or grey   | £140-180   |
| 38d  | Alvis (postwar) green, maroon or grey   | £80-110    |
| 38e  | Armstrong-Siddeley (Coupé) grey, light green or red                               | £90-120    |
| 38f  | Jaguar (SS Jaguar Sports Car) red, blue, light blue, light brown or grey          | £120-160   |
| 39   | Saloon Cars, later U.S.A. Saloon Cars 39a-f                                       | £1750-2500 |
| 39a  | Packard Super 8 Touring Sedan Car light green, grey, royal blue or yellow         | £220-320   |
| 39a  | Packard (postwar) brown, blue, green or olive                                     | £80-120    |
| 39b  | Oldsmobile 6 Sedan black, green or maroon   | £220-300   |
| 39b  | Oldsmobile (postwar) grey, dark blue, light blue, cream or fawn                   | £80-120    |
| 39bu | Oldsmobile (duotone) cream with tan, light blue with dark blue                    | £450-650   |
| 39c  | Lincoln Zephyr Coupé grey, yellow or green  | £220-300   |
| 39c  | Lincoln Zephyr (postwar) brown or grey  | £80-100    |
| 39cu | Lincoln Zephyr (duotone) red with maroon or tan with brown                        | £450-650   |
| 39d  | Buick Viceroy Saloon Car maroon, green or blue                                    | £220-290   |
| 39d  | Buick (postwar) maroon, beige or grey   | £80-100    |
| 39e  | Chrysler Royal Sedan green, grey or royal blue                                    | £220-270   |
| 39e  | Chrysler (postwar) dark green, royal blue, grey, cream or light blue              | £90-140    |
| 39eu | Chrysler (duotone) yellow with red, lt green with dk green, also tan with red     | £450-650   |
| 39f  | Studebaker State Commander yellow, grey or green                                  | £200-270   |
| 39f  | Studebaker (postwar) dark blue, olive, grey, green or yellow                      | £90-120    |
| 40a  | Riley Saloon shades of green, grey, blue or cream, R158                           | £70-110    |
| 40b  | Triumph 1800 Saloon grey, fawn, tan, black or shades of blue, R151                | £70-110    |
| 40d  | Austin Devon Saloon maroon, shades of suede green or blue, red or tan, R152       | £90-120    |
| 40d  | Austin Devon Saloon pink with green upper or yellow with blue                     | £150-200   |
| 40e  | Standard Vanguard (open arches) tan, R153   | £80-130    |



|     |  |           |
|-----|--|-----------|
| 40e | Standard Vanguard (closed arches) tan, light blue, cream             | £100-120  |
| 40e | Standard Vanguard dark blue or maroon                                | £300-400  |
| 40f | Hillman Minx Saloon shades of tan or green, R154                     | £90-120   |
| 40f | Hillman Minx Saloon green with cream or blue with pink               | £220-270  |
| 40g | Morris Oxford Saloon mid green, grey, dark green or tan, R159        | £90-130   |
| 40g | Morris Oxford Saloon cream with green or pink with cream             | £150-200  |
| 40g | Morris Oxford Saloon blue  | £750-1000 |
| 40h | Austin Taxi blue, black, yellow, green & yellow, R254                | £90-125   |
| 40j | Austin Somerset Saloon red, shades of blue, R161                     | £90-125   |
| 40j | Austin Somerset Saloon black with cream upper, red with yellow       | £150-200  |
| 42  | Police Hut, Motorcycle Patrol, Policeman 42a-d                       | £200-250  |
| 42a | Police Box dark blue, R751   | £25-35    |
| 42b | Motor Cycle Patrol dark blue, silver, dark green sidecar             | £70-90    |
| 42b | Motor Cycle Patrol (postwar) dark blue, dark green sidecar           | £40-50    |
| 42c | Point Duty Policeman (in white coat) white long coat                 | £25-30    |
| 42d | Point Duty Policeman dark blue, white gauntlets                      | £25-30    |
| 43  | RAC Box, Motor Cycle Patrol and Guides 43a-d                         | £300-400  |
| 43a | RAC Box blue with white & black                                      | £70-90    |
| 43b | RAC Motor Cycle Patrol black, silver, red sash                       | £70-90    |
| 43b | RAC Motor Cycle Patrol black cycle, blue rider                       | £40-50    |
| 43c | RAC Guide Directing Traffic blue uniform with red sash               | £25-30    |
| 43d | RAC Guide Saluting blue uniform with red sash                        | £25-30    |
| 44  | AA Box, Motor Cycle Patrol and Guides 44a-d                          | £300-400  |
| 44a | AA Box black with yellow printing, white roof                        | £90-110   |
| 44b | AA Motor Cycle Patrol black, silver, yellow sidecar, blue sash, R270 | £70-90    |
| 44b | AA Motor Cycle Patrol black, yellow sidecar with variable 'AA' badge | £40-60    |
| 44c | AA Guide Directing Traffic tan uniform, blue sash                    | £25-30    |
| 44d | AA Guide Saluting tan uniform, blue sash                             | £25-30    |
| 45  | Garage (tinplate) cream, green                                       |           |



60k: Percival Gull plane.



A trio of exciting colours on the Standard Vanguard – 40e.

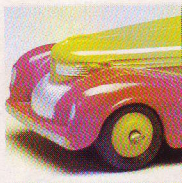
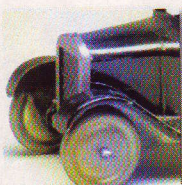


|     |   |          |     |  |            |
|-----|---|----------|-----|--|------------|
|     | doors & base, orange tiled roof   | £300-450 |     | (prewar & early postwar)   |            |
| 46  | Pavement Set grey card  | £120-180 |     | royal blue, (postwar) brown  | £25-30     |
| 47  | Road Signs white underside of base  | £150-175 | 49d | Shell Petrol Pump red  | £25-30     |
| 47  | Road Signs black underside of base  | £80-90   | 49e | Oil Bin yellow, 'Pratts' decal prewar  | £25-50     |
| 47a | Traffic Signal Four-face white underside of base  | £10-15   | 50  | Ships of the British Navy contains 14 ships  | £300-400   |
| 47a | Traffic Signal Four-face / Robot 4-Face black underside of base, from mid-1959 all white base                   | £10-15   | 50a | Battle Cruiser 'Hood' grey   | £30-40     |
| 47b | Traffic Signal Three-face white underside of base   | £10-15   | 50b | Battleship 'Nelson' Class grey   | £30-40     |
| 47c | Traffic Signal Two-face white underside of base   | £10-15   | 50c | Cruiser 'Effingham' grey   | £30-40     |
| 47d | Belisha Safety Beacon white underside of base   | £7-10    | 50d | Cruiser 'York' grey  | £25-30     |
| 47d | Belisha Beacon black underside of base  | £7-10    | 50e | Cruiser 'Delhi' grey   | £25-30     |
| 47e | '30 Mile Limit' Sign white underside of base  | £10-15   | 50f | Destroyer 'Broke' Class grey   | £15-20     |
| 47f | 'Derestriction' Sign white underside of base  | £10-15   | 50g | Submarine K-Class grey   | £15-20     |
| 47g | 'School' Sign white under base  | £10-15   | 50h | Destroyer 'Amazon' Class grey  | £15-20     |
| 47h | 'Steep Hill' Sign white underside of base   | £10-15   | 50k | Submarine X-Class grey   | £15-20     |
| 47k | 'Bend' Sign white underside of base   | £10-15   | 51  | Famous Liners  | £250-320   |
| 47m | Left-hand 'Corner' Sign white underside of base   | £10-15   | 51b | 'Europa' black hull, white deck, tan funnels   | £40-45     |
| 47n | Right-hand 'Corner' Sign white underside of base  | £10-15   | 51c | 'Rex' black hull, white deck, red, green & white funnels                                 | £40-45     |
| 47p | 'Road Junction' Sign white underside of base  | £10-15   | 51d | 'Empress of Britain' white, light stone funnels  | £40-45     |
| 47q | 'No Entry' Sign white underside of base   | £12-15   | 51e | 'Strathaird' white, light stone funnels  | £40-45     |
| 47r | 'Major Road Ahead' Sign white underside of base   | £12-15   | 51f | 'Queen of Bermuda' light grey hull, white deck, red & black funnels                      | £40-45     |
| 47s | 'Crossing. No Gates' Sign white underside of base   | £12-15   | 51g | 'Britannic' black hull, tan deck, white super, black/ tan funnels                        | £40-45     |
| 47t | 'Round-About' Sign white underside of base  | £12-15   | 52  | Cunard White Star/No 534/'Queen Mary' black hull, white upper, red & black funnels, R52a | £70-80     |
| 47y | Robot 2-Face (Back to Back)   |          | 52a | 'Queen Mary' (prewar) black hull, white upper, red & black funnels                       | £60-70     |
| 48  | Filling and Service Station yellow printed walls, green, orange or blue base, green, blue, brown or yellow roof | £300-400 | 52a | 'Queen Mary' (postwar) black hull, white upper, red & black funnels                      | £35-55     |
| 49  | Petrol Pumps Set 49a-e (Pratts on 49e)  | £200-250 | 52b | 'Queen Mary' (no rollers) black hull, white upper, red & black funnels                   | -          |
| 49  | Petrol Pumps Set 49a-e  | £100-130 | 52m | 'Queen Mary' (no rollers/box), postwar black hull, white upper, red & black funnels      | £30-35     |
| 49a | Bowser Petrol Pump green  | £25-30   | 60  | Aeroplanes/British Aeroplanes 60a-f (no registration letters)                            | £1500-1800 |
| 49b | Wayne Petrol Pump light blue  | £25-30   | 60  | Aeroplanes/British Aeroplanes 60a-f (with registration letters)                          | £900-1200  |
| 49c | Theo Petrol Pump  |          | 60a | Imperial Airways Liner sunray on wings   | £300-350   |
|     |   |          | 60a | Imperial Airways Liner contrasting pattern on wigtips and tail                           | £300-375   |
|     |   |          | 60a | Imperial Airways Liner G-ABTI  | £275-340   |
|     |   |          | 60b | DH Leopard Moth no registration letters  | £180-230   |



# Dinky toys

448 and 449:  
Chevrolet on its  
own and with  
trailer.



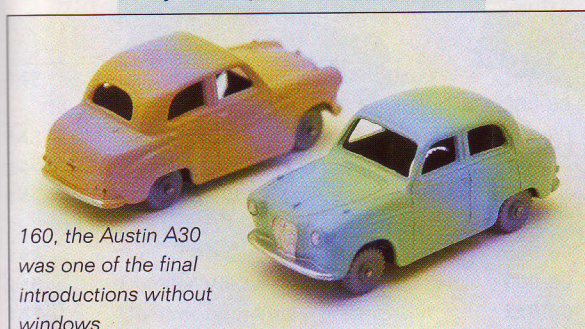
## Fact File

Rare colour variations continue to fetch large sums at auction as collectors seek every variation of their chosen themes. This can artificially boost prices.

|     |   |          |      |  |          |
|-----|---|----------|------|--|----------|
| 60b | DH Leopard Moth G-ACPT  | £150-200 | 60w  | Flying Boat (postwar) silver   | £130-150 |
| 60c | Percival Gull no registration letters   | £180-230 | 60w  | Flying Boat (postwar) light or dark green or blue, some red                  | £180-240 |
| 60c | Percival Gull G-ADZO (see 60k)  | £150-200 | 60x  | Atlantic Flying Boat casting of 60r in bright colours                        | £340-450 |
| 60d | Low Wing Monoplane no registration letters  | £150-200 | 60y  | Thompson Aircraft Refuelling Tender red with black, 'Shell Aviation Service' | £275-340 |
| 60d | Low Wing Monoplane G-AVYP   | £150-200 | 61   | R.A.F. Aeroplanes 60h, 2 x 60n, 2 x 60p                                      | £600-900 |
| 60e | General Monospar no registration letters  | £180-230 | 62a  | Vickers-Supermarine Spitfire silver  | £110-160 |
| 60e | General Monospar G-ABVP   | £140-190 | 62*a | Spitfire Fund Spitfire bright coloured pins and pendants                     | £400-500 |
| 60f | Cierva Autogiro gold with blue, without then with pilot                               | £160-210 | 62a  | Spitfire (postwar castings) silver   | £80-110  |
| 60g | DH Comet Aeroplane red, gold, silver, red, some with G-ASCR                           | £110-170 | 62b  | Bristol Blenheim Bomber silver   | £100-150 |
| 60g | Light Racer G-RACE, silver, yellow or red   | £70-100  | 62b  | Medium Bomber (postwar) silver   | £80-125  |
| 60h | Singapore Flying Boat silver or grey  | £200-300 | 62d  | Bristol Blenheim Bomber camouflaged  | £150-200 |
| 60k | Percival Gull Monoplane blue and silver, G-ADZO in blue or black                      | £220-270 | 62e  | Vickers Supermarine Spitfire camouflaged                                     | £150-190 |
| 60k | Light Tourer dark or light green, red or silver                                       | £90-150  | 62g  | Boeing Flying Fortress silver, some grey, USAAC                              | £170-210 |
| 60m | 4-Engined Flying Boat casting of 60h in bright colours with registration letters      | £220-300 | 62g  | Long Ranger Bomber (postwar) silver, USAAC                                   | £100-140 |
| 60n | Fairey Battle Bomber silver, blued canopy   | £160-200 | 62h  | Hurricane Single Seater Fighter camouflaged                                  | £150-190 |
| 60p | Gloster Gladiator Biplane silver or grey  | £160-200 | 62k  | Airspeed Envoy King's Aeroplane silver, red & blue, G-AEXX                   | £180-250 |
| 60r | Empire Flying Boat silver, Caledonia G-ADHM, Cambria G-ADUV,                          | £250-350 | 62m  | Airspeed Envoy red, silver, blue, green, gold, yellow                        | £140-170 |
| 60r | Empire Flying Boat the other 11 registration letters                                  | £275-400 | 62m  | Light Transport (postwar) silver, red or blue, G-ATMH                        | £90-125  |
| 60r | Empire Flying Boat (postwar) silver, G-ADHM, G-ADUV, G-ADVB                           | £210-260 | 62n  | Junkers JU90 Airliner silver, D-AURE, D-AIVI                                 | £225-300 |
| 60s | Medium Bomber (Mirror Pair) light camouflage, black undersurface, 1 roundel per plane | £380-450 | 62p  | Ensign Class Airliner silver   | £180-225 |
| 60s | Fairey Battle Bomber (Camouflaged) camouflage with roundels on both wings             | £170-225 | 62p  | Armstrong Whitworth Air Liner silver   | £130-180 |
| 60t | Douglas DC3 Air Liner silver PH-ALI   | £250-300 | 62p  | Armstrong Whitworth Air Liner blue, green or grey                            | £150-200 |
| 60v | Armstrong Whitworth Whitley Bomber silver   | £180-220 | 62r  | De Havilland Albatross Mail Liner silver G-AEUV                              | £200-225 |
| 60w | Flying Boat Clipper III silver, USA NC 16736  | £180-235 | 62r  | 4-engined Liner grey, light blue, silver or fawn, some with G-ATPV           | £110-150 |
|     |   |          | 62s  | Hawker Hurricane Single Seat   |          |



|     |  |            |
|-----|--|------------|
|     | Fighter silver, with wheels  | £110-160   |
| 62s | Hurricane (postwar) silver   | £80-110    |
| 62t | Armstrong Whitworth Whitley Bomber camouflaged                                   | £210-270   |
| 62w | Imperial Airways Frobisher Class Liner silver, G-AFDI, G-AFDJ, G-AFDK            | £200-225   |
| 62x | British 40-Seater Air Liner casting of 62p in bright colours, G-AZGA             | £250-320   |
| 62y | Giant High Speed Monoplane casting of 62n in bright colours, G-AZBK              | £190-250   |
| 62y | Giant High Speed Monoplane (postwar) casting of 62n in bright colours, G-ATBK    | £140-180   |
| 63  | Mayo Composite 63a,b   | £290-390   |
| 63a | Maia silver G-ADHK Maia  | £200-275   |
| 63b | Seaplane Mercury silver G-ADHJ Mercury   | £110-160   |
| 63b | Seaplane silver G-AVKW   | £70-100    |
| 63b | Seaplane (postwar) silver G-AVKW, R700   | £70-100    |
| 64  | Presentation Aeroplane Set 60g, 62h, 62k, 62s, 63b                               | £800-1100  |
| 64  | Presentation Aeroplane Set 60g, 62a, 62k, 62s, 63b                               | £800-1100  |
| 65  | Presentation Aeroplane Set 60r, 60t, 60v, 60w, 62n, 62p, 62r, 62w                | £2000-2250 |
| 66  | Camouflaged Aeroplane Set 66a-f  | £2100-2700 |
| 66a | Heavy Bomber camouflaged   | £400-500   |
| 66b | Dive Bomber Fighter camouflaged  | £225-275   |
| 66c | Two-Seater Fighter camouflaged   | £225-275   |
| 66d | Torpedo Dive Bomber camouflaged  | £225-275   |
| 66e | Medium Bomber camouflaged  | £225-275   |
| 66f | Army Co-operation Autogiro silver grey with silver rotor                         | £200-250   |
| 67a | Junkers Ju89 Heavy Bomber black, light blue under                                | £350-500   |
| 68  | Aircraft in Service Camouflage 68a, 68b, 2 x 60n, 2 x 62a, 3 x 62e, 3 x 62h, 62t | £2600-3500 |
| 68a | Armstrong Whitworth Ensign Liner camouflaged                                     | £220-270   |
| 68b | Frobisher Class Liner camouflaged  | £220-270   |
| 70a | Avro York Airliner silver, G-AGJC  | £90-140    |
| 70b | Tempest II Fighter silver  | £35-50     |
| 70c | Viking Airliner silver or grey, G-AGOL   | £60-80     |
| 70d | Twin-Engine Fighter silver, R731   | £25-35     |
| 70e | Gloster Meteor Twin-Jet Fighter silver, R732                                     | £25-35     |
| 70f | Shooting Star Jet Fighter silver, R733   | £25-35     |
| 100 | Lady Penelope's FAB 1  |            |



160, the Austin A30 was one of the final introductions without windows

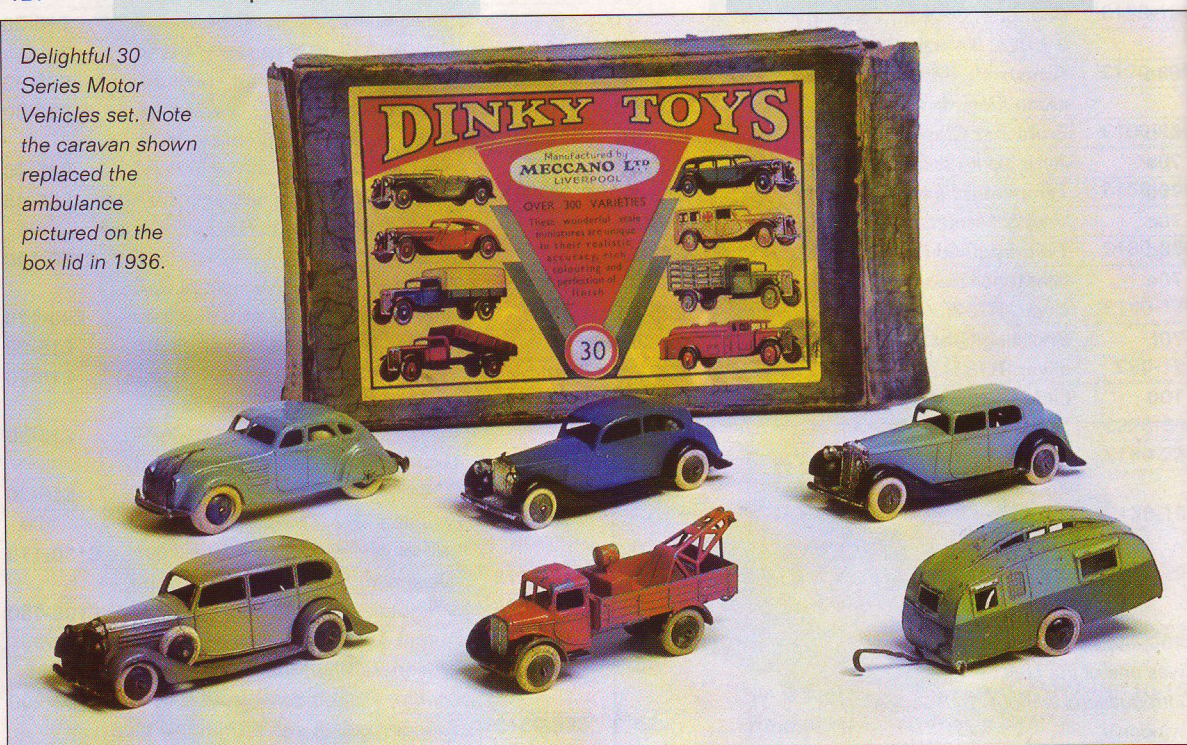
|        |   |          |
|--------|---|----------|
|        | shades of pink  | £170-240 |
| 101/4* | 'Dolly Varden' Doll's House                                   | £600-900 |
| 101    | Dining-Room Furniture walnut finish                           | £200-250 |
| 101a   | Table walnut finish   | £25-30   |
| 101b   | Sideboard walnut finish                                       | £35-40   |
| 101c   | Carver Chair walnut finish                                    | £15-20   |
| 101d   | Chair walnut finish   | £10-15   |
| 101    | Sunbeam Alpine (Touring Finish) blue or pinkish-maroon        | £90-120  |
| 101    | Thunderbirds II and IV green, metallic dark green             | £200-250 |
| 102    | Bedroom Furniture green or pink                               | £200-250 |
| 102a   | Bed green or pink   | £25-30   |
| 102b   | Wardrobe green or pink  | £25-30   |
| 102c   | Dressing Table green or pink                                  | £25-30   |
| 102d   | Dressing Chest green or pink                                  | £20-25   |
| 102e   | Dressing Table Stool green or pink                            | £15-20   |
| 102f   | Chair green or pink   | £10-15   |
| 102    | MG Midget (Touring Finish) light green, yellow                | £150-200 |
| 102    | Joe's Car green   | £100-130 |
| 103    | Kitchen Furniture blue & white or green & cream               | £200-250 |
| 103a   | Refrigerator blue & white or green & cream                    | £35-40   |
| 103b   | Kitchen Cabinet blue & white or green & cream                 | £35-40   |
| 103c   | Electric Cooker blue & white or green & cream                 | £35-40   |
| 103d   | Table blue & white or green & cream                           | £25-30   |
| 103e   | Chair blue & white or green & cream                           | £10-15   |
| 103    | Austin Healey 100 (Touring Finish) cream, red                 | £150-200 |
| 103    | Spectrum Patrol Car metallic red, S logo on door              | £90-120  |
| 104    | Bathroom Furniture pink & white or green & white              | £200-250 |
| 104a   | Bathpink & white or green & white                             | £30-35   |
| 104b   | Bath Mat pink & white or green & white                        | £15-20   |
| 104c   | Pedestal Hand Basin pink & white or green & white             | £30-35   |
| 104d   | Stool pink & white or green & white                           | £25-30   |
| 104e   | Linen Basket pink & white or green & white                    | £25-30   |
| 104f   | Toilet pink & white or green & white                          | £35-45   |
| 104    | Aston Martin DB3S (Touring Finish) blue or pink               | £130-190 |
| 104    | Spectrum Pursuit Vehicle metallic blue, S logo & SPV on sides | £90-120  |
| 105a   | Garden Roller green & red, R381                               | £15-20   |
| 105b   | Wheelbarrow brown & red, R382                                 | £15-20   |
| 105c   | 4-Wheel Hand Truck blue or green, R393                        | £15-20   |
| 105e   | Grass Cutter yellow, green & red, R384                        | £15-20   |
| 105    | Triumph TR2 (Touring Finish) yellow or grey                   | £130-170 |
| 105    | Maximum Security Vehicle white, S logo on door                | £100-130 |
| 106    | Austin Atlantic R140a   | -        |
| 106    | 'Prisoner' Mini-Moke white with red & white striped canopy    | £160-200 |
| 106    | Thunderbirds II and IV metallic blue                          |          |



# Dinky toys

|      |  |          |     |  |            |
|------|--|----------|-----|--|------------|
|      | with white, later black under  | £80-110  |     | 112, 113, 120, 183   | £1000-1200 |
| 107a | Sack Truck blue, R385  | £15-20   | 122 | Touring Gift Set 188, 193, 195, 270, 295, 796                                  | £700-1000  |
| 107  | Sunbeam Alpine (Competition Finish) light blue or pink                           | £80-100  | 122 | Volvo 265DL Estate Car met. blue & white or orange                             | £30-40     |
| 107  | Stripey The Magic Mini with figures white with blue, red & yellow stripes        | £180-225 | 123 | Mayfair Gift Set 142, 150, 186, 194, 198, 199                                  | £1500-2000 |
| 108  | MG Midget (Competition Finish) red or white                                      | £110-140 | 123 | Princess 2200HL Saloon bronze with black trim, white with black roof, or white | £25-30     |
| 108  | Sam's Car silver, gold, red or light blue  | £90-125  | 124 | Holidays Gift Set 137, 142, 796, 952   | £500-700   |
| 109  | Austin Healey 100 (Competition Finish) cream or yellow                           | £90-110  | 124 | Rolls-Royce Phantom V Limousine metallic blue                                  | £35-60     |
| 109  | Gabriel Model T Ford yellow & black  | £60-90   | 125 | Fun A'Hoy Set (130 + 796) car: light blue, trailer: orange                     | £150-190   |
| 110  | Aston Martin DB3S (Competition Finish) grey or green                             | £90-120  | 126 | Motor Show Set 127, 133, 151, 171 or 127, 151, 159, 171                        | £900-1200  |
| 110  | Aston Martin DB5 metallic red  | £60-80   | 127 | Rolls-Royce Silver Cloud III metallic green, bronze, metallic red              | £90-110    |
| 111  | Triumph TR2 (Competition Finish) turquoise or pink                               | £80-110  | 128 | Mercedes-Benz 600 metallic red, metallic blue                                  | £50-70     |
| 111  | Cinderella's Coach pink & gold   | £15-20   | 129 | MG Sports Car white or red   | £280-330   |
| 112  | Austin Healey Sprite MkII red  | £80-110  | 129 | Volkswagen 1300 Sedan met blue   | £50-70     |
| 112  | Austin Healey Sprite MkII turquoise, lilac, dark or light blue (S Africa)        | £250-350 | 130 | Ford Consul Corsair metallic red or light blue                                 | £60-70     |
| 112  | Purdey's Triumph TR7 yellow  | £40-60   | 131 | Cadillac Eldorado pink or yellow   | £90-130    |
| 113  | MGB cream  | £60-80   | 131 | Jaguar 'E'-type 2+2 white, metallic purple, bronze, red                        | £90-110    |
| 113  | MGB red with cream seats, blue with red (S Africa)                               | £250-350 | 132 | Packard Convertible green or tan   | £90-130    |
| 114  | Triumph Spitfire silver-grey, red or gold  | £80-100  | 132 | Ford 40-RV silver, met. blue, orange-red with yellow panels                    | £50-70     |
| 114  | Triumph Spitfire purple  | £100-125 | 133 | Cunningham C-5R white with 2 blue stripes                                      | £80-100    |
| 115  | Plymouth Fury Sports white   | £70-90   | 133 | Ford Cortina 1965 gold with white roof or yellow                               | £70-90     |
| 115  | UB Taxi yellow, blue & black   | £50-60   | 134 | Triumph Vitesse metallic green with white                                      | £60-80     |
| 116  | Volvo 1800S red or dark metallic red   | £70-90   | 135 | Triumph 2000 metallic green-blue/white roof (white/blue - 118 only)            | £60-80     |
| 117  | 4-Berth Caravan with Transparent Roof blue & cream or yellow & cream             | £30-50   |     |  |            |
| 118  | Tow-Away Glider Set (+135 Triumph 200) cream with blue roof, 'Southdown' sticker | £180-225 |     |  |            |
| 120  | Jaguar E-type red  | £60-80   |     |  |            |
| 120  | Happy Cab white, yellow & blue   | £30-50   |     |  |            |
| 121  | Goodwood Sports Cars   |          |     |  |            |

Delightful 30 Series Motor Vehicles set. Note the caravan shown replaced the ambulance pictured on the box lid in 1936.







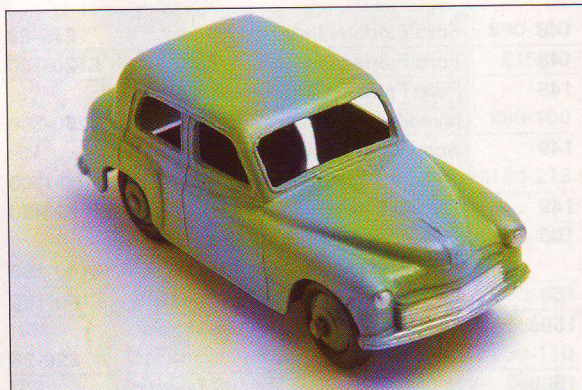
258: US Police car. This took various guises in its long run.

|       |   |            |
|-------|---|------------|
| 135   | Triumph 2000 various Triumph factory colour schemes   | A          |
| 136   | Vauxhall Viva white, light metallic blue or blue  | £70-90     |
| 137   | Plymouth Fury Convertible metallic grey, green, blue or pink  | £70-90     |
| 138   | Hillman Imp metallic green or metallic red  | £60-90     |
| 139a  | Ford Fordor Sedan yellow, red, green or tan, R170   | £90-125    |
| 139a  | Ford Fordor Sedan cream with red sides or pink with blue  | £170-225   |
| 139a  | Ford Fordor Sedan cream with red lower sides or pink with blue  | £190-240   |
| 139am | Ford Fordor US Army Staff Car olive drab with white stars on roof & doors, R170m, 675                           | £200-250   |
| 139b  | Hudson Commodore Sedan dark blue with tan roof, cream with maroon, dark blue with grey, mid blue with tan, R171 | £110-140   |
| 139b  | Hudson Commodore Sedan red with light blue sides or blue with grey, also maroon with light blue                 | £170-225   |
| 139b  | Hudson Commodore Sedan red with turquoise lower sides or blue with grey   | £190-240   |
| 139   | Ford Cortina light blue or met blue   | £70-90     |
| 139   | Ford Cortina green (S Africa)   | £200-350   |
| 140a  | Austin Atlantic Convertible blue, black, R106   | £120-150   |
| 140a  | Austin Atlantic Convertible pink, dark blue, red  | £180-220   |
| 140b  | Rover 75 maroon or cream, R156  | £80-140    |
| 140b  | Rover 75 red, light green upper with dark green lower, cream with blue or cream with dark blue                  | £170-220   |
| 140   | Morris 1100 light blue  | £40-50     |
| 140   | Morris 1100 dark cream or sky blue (S Africa)   | £200-300   |
| 141   | Vauxhall Victor Estate Car yellow   | £40-55     |
| 141   | Vauxhall Victor Estate Car shades of salmon pink, ivory, yellow (S Africa)                                      | £250-350   |
| 142   | Jaguar Mark 10 light or medium metallic blue  | £60-80     |
| 143   | Ford Capri green with white roof  | £60-90     |
| 144   | Volkswagen 1500 white, bronze   | £55-65     |
| 144   | Volkswagen 1500 caramel, light blue (S Africa)  | £200-300   |
| 145   | Singer Vogue metallic green   | £60-80     |
| 146   | Daimler V8 2.5 litre metallic green   | £60-90     |
| 147   | Cadillac 62 metallic green  | £60-90     |
| 148   | Ford Fairlane light green   | £70-80     |
| 148   | Ford Fairlane metallic green  | £120-150   |
| 148   | Ford Fairlane bright blue, mid blue, lavender, heather grey (S Africa)  | £250-350   |
| 149   | Sports Cars Gift Set 107, 108, 109, 110, 111  | £1100-1500 |
| 149   | Citroen Dyane bronze with black roof  | £25-30     |
| 150   | Royal Tank Corps Personnel 150a, 2x150b, 2x150c, 150e   | £140-160   |
| 150   | Armoured Corps Personnel khaki  | £140-160   |
| 150a  | Royal Tank Corps Officer khaki, dark blue beret   | £20-25     |
| 150b  | Royal Tank Corps Private (seated) dark blue   | £20-25     |
| 150b  | Private Seated/Armoured Corps Private khaki   | £50-60     |
| 150c  | Royal Tank Corps Private (standing) dark blue   | £20-35     |
| 150d  | Royal Tank Corps Driver dark blue   | £20-25     |
| 150e  | Royal Tank Corps N.C.O. (walking) dark blue   | £20-25     |
| 150   | Rolls-Royce Silver Wraith duotone grey  | £60-80     |
| 151   | Royal Tank Corps Medium Tank Set 151a-d, 150d   | £450-600   |
| 151a  | Medium Tank gloss green with gloss green base   | £150-200   |
| 151a  | Medium Tank matt green, black base, no triangle   | £130-160   |
| 151b  | Transport Wagon gloss green   | £140-160   |
| 151b  | Transport Wagon brown or matt green   | £100-130   |
| 151c  | Cooker Trailer gloss green  | £60-90     |
| 151d  | Water Tank Trailer gloss green  | £60-90     |
| 151   | Triumph 1800 Saloon R40b  | -          |
| 151   | Vauxhall Victor 101 yellow, metallic red  | £60-80     |
| 152   | Royal Tank Corps Light Tank Set 152a-c, 150d  | £450-550   |
| 152a  | Light Tank gloss green body & base  | £130-150   |
| 152a  | Light Tank brown or matt green  | £100-140   |
| 152b  | Reconnaissance Car gloss green  | £110-150   |
| 152b  | Reconnaissance Car brown or matt green  | £90-110    |
| 152c  | Austin Seven Car gloss green, camouflaged   | £160-200   |
| 152   | Austin Devon Saloon R40d  | -          |
| 152   | Rolls Royce Phantom V Limousine dark blue, metallic blue  | £35-60     |
| 153   | Standard Vanguard Saloon R40e   | -          |
| 153   | Aston Martin DB6 metallic blue or metallic green  | £70-90     |
| 153a  | Jeep matt green or green-brown  | £100-125   |
| 154   | Hillman Minx R40f   | -          |
| 154   | Ford Taunus 17M yellow with white roof  | £45-65     |
| 155   | Ford Anglia blue  | £70-100    |
| 155   | Ford Anglia cream, off-white, blue (S Africa)   | R          |
| 156   | Mechanised Army Set 151, 152, 161, 162  | £2400-3500 |
| 156   | Rover 75 R140b  | -          |
| 156   | Saab 96 metallic red  | £60-80     |
| 157   | Jaguar XK120 yellow, red, white or grey-green   | £150-200   |

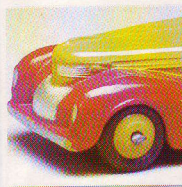
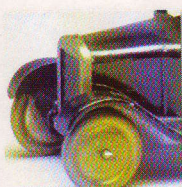


# Dinky toys

40 series 40f the Hillman Minx is a charming model.



|      |   |          |
|------|---|----------|
| 157  | Jaguar XK120 dark pink with turquoise sides, light grey with yellow       | £200-250 |
| 157  | B.M.W. Tilux blue & white   | £50-70   |
| 158  | Riley R40a  | -        |
| 158  | Rolls Royce Silver Shadow met.red or met. blue                            | £50-70   |
| 159  | Morris Oxford R40g  | -        |
| 159  | Ford Cortina MkII white   | £60-80   |
| 160  | Royal Artillery Personnel 160a, 2x160b, 160c, 2x160d                      | £140-170 |
| 160  | Austin A30 fawn or blue   | £80-100  |
| 160  | Mercedes-Benz 250SE met blue  | £40-60   |
| 160a | Royal Artillery N.C.O. (hands on chest) khaki                             | £15-20   |
| 160b | RA Gunner (seated hands on thighs) khaki                                  | £15-20   |
| 160b | RA Gunner (seated hands on thighs) khaki                                  | £15-20   |
| 160c | RA Gunlayer (seated hands out) khaki                                      | £15-20   |
| 160d | RA Gunlayer (standing hands at sides) khaki                               | £15-20   |
| 161  | Mobile Anti-Aircraft Unit 161a, 161b                                      | £450-700 |
| 161a | Lorry with Searchlight gloss green  | £275-340 |
| 161b | Anti-Aircraft Gun on Trailer gloss green                                  | £100-125 |
| 161b | Anti-Aircraft Gun on Trailer brown or matt green                          | £80-100  |
| 161  | Austin Somerset Saloon R40j   | -        |
| 161  | Ford Mustang Fastback 2+2 white or yellow                                 | £50-70   |
| 162  | 18-Pounder Quick Firing Field Gun Unit 162a, 162b 162c                    | £150-180 |
| 162a | Light Dragon Motor Tractor gloss or matt green                            | £80-110  |
| 162b | Trailer gloss or matt green   | £25-30   |
| 162c | 18-Pounder Gun gloss or matt green  | £25-30   |
| 162  | Ford Zephyr Saloon cream with green lower sides, ligh blue with dark blue | £90-120  |
| 162  | Triumph 1300 light blue   | £45-70   |
| 163  | Bristol 450 Coupé green, green hubs, black '27' on white circle           | £75-90   |
| 163  | Volkswagen 1600TL Fastback red or dark metallic red, metallic blue        | £50-80   |
| 164  | Vauxhall Cresta grey & green or maroon & cream                            | £90-120  |
| 164  | Ford Zodiac MkIV silver, silver blue                                      | £60-70   |
| 164  | Ford Zodiac MkIV bronze   | £90-140  |
| 165  | Humber Hawk green with black roof   | £80-100  |



## Fact File

TV related Dinky models continue to command high prices, particularly the Thunderbirds vehicles and Captain Scarlet & Mysterons models.

|      |  |          |
|------|--|----------|
|      | & lower sides, cream with maroon   | £80-100  |
| 165  | Humber Hawk green with black roof only   | £110-150 |
| 165  | Ford Capri metallic green or metallic purple   | £45-70   |
| 166  | Sunbeam Rapier cream with orange lower sides, light blue with dark blue  | £80-110  |
| 166  | Renault R16 dark blue  | £35-45   |
| 167  | AC Aceca cream with brown or maroon roof, grey with red roof   | £90-120  |
| 167  | AC Aceca cream   | £150-200 |
| 168  | Singer Gazelle cream & brown or grey & green   | £90-110  |
| 168  | Ford Escort light blue   | £45-55   |
| 168  | Ford Escort metallic red   | £70-90   |
| 169  | Studebaker Golden Hawk green & cream or red & tan  | £90-120  |
| 169  | Ford Corsair 2000E silver with black roof  | £70-90   |
| 170  | Ford Fordor R139a  | -        |
| 170m | Ford Fordor US Army Staff Car R139am   | -        |
| 170  | Lincoln Continental metallic orange with white roof or light blue with white                                   | £80-110  |
| 171  | Hudson Commodore R139b   | -        |
| 171  | Austin 1800 met blue or light blue   | £40-60   |
| 172  | Studebaker Land Cruiser light blue or green  | £90-111  |
| 172  | Studebaker Land Cruiser maroon with cream sides, tan with cream, maroon with cream lower sides, tan with cream | £150-200 |
| 172  | Fiat 2300 Station Wagon 2-tone blue  | £50-70   |
| 173  | Nash Rambler green with red flash or pink with blue  | £60-80   |
| 173  | Pontiac Parisienne metallic maroon   | £40-60   |
| 174  | Hudson Hornet red & cream or yellow & grey   | £90-110  |
| 174  | Mercury Cougar metallic blue   | £35-45   |
| 175  | Hillman Minx blue & grey or green upper & tan lower  | £90-110  |
| 175  | Cadillac Eldoradometallic blue with black roof or met purple with black  | £40-60   |
| 176  | Austin A105 cream with blue flash or grey with red   | £90-110  |
| 176  | Austin A105 cream with blue flash & roof or grey with red  | £120-150 |
| 176  | NSU Ro80 metallic red  | £40-60   |
| 176  | NSU Ro80 metallic blue   | £100-130 |
| 177  | Opel Kapitän light blue  | £55-80   |
| 177  | Opel Kapitän dark blue, dark cream, caramel, mid blue (S Africa)   | -        |
| 178  | Plymouth Plaza pink with green roof & flash, light blue with dark blue   | £90-120  |
| 178  | Plymouth Plaza light blue with white   | £150-200 |
| 178  | Mini Clubman bronze or red   | £30-45   |
| 179  | Studebaker President yellow with blue flash or light blue with blue  | £90-120  |
| 179  | Opel Commodore metallic blue with black roof   | £30-50   |
| 180  | Packard Clipper fawn with pink top, orange with grey top   | £90-120  |
| 180  | Rover 3500 Saloon white  | £15-20   |



|     |  |          |     |   |          |
|-----|--|----------|-----|---|----------|
| 181 | Volkswagen (Beetle) grey, green, dark blue, blue-grey, light blue                                | £60-90   | 192 | Range Rover bronze or yellow  | £25-30   |
| 181 | Volkswagen (S Africa) lime green, light blue, mid grey, light yellow, metallic blue              |          | 193 | Rambler Cross-Country Station Wagon yellow with white roof  | £80-100  |
| 182 | Porsche 365A Coupé cream, red, light blue  | £100-130 | 193 | Rambler Cross-Country Station Wagon lime green, lavender, grey-green, lavender with cream roof, lt blue with cream, dk blue with cream (S Africa) | £250-350 |
| 182 | Porsche 365A Coupé pinkish maroon  | £200-250 | 194 | Bentley S Series Coupé grey or bronze   | £90-120  |
| 183 | Fiat 600 light green or red  | £55-80   | 194 | Bentley S Series Coupé lime green, cream, red interiors (S Africa)  | £250-350 |
| 183 | Morris Mini Minor (Automatic) red with black roof, met. red with black or all met. blue          | £70-90   | 195 | Jaguar 3.4 Litre Mark II maroon, grey or cream  | £80-100  |
| 184 | Volvo 122S red   | £80-90   | 195 | Jaguar 3.4 Litre Mark II red, off white, sky blue, smokey light blue (S Africa)   | £250-350 |
| 184 | Volvo 122S white   | £200-250 | 195 | Range Rover Fire Chief red or metallic red  | £35-45   |
| 184 | Volvo 122S grey-green, lilac, lavender, mid blue (S Africa)                                      | £250-350 | 196 | Holden Special Sedan bronze with white roof   | £50-70   |
| 185 | Alfa Romeo 1900 Super Sprint yellow or red   | £70-90   | 196 | Holden Special Sedan turquoise with white roof (S Africa)   | £250-350 |
| 186 | Mercedes Benz 220SE shades of blue   | £40-60   | 197 | Morris Mini-Traveller white with brown woodwork or green with brown   | £60-90   |
| 186 | Mercedes Benz 220SE grey-blue, sky blue (S Africa)   |          | 197 | Morris Mini-Traveller all-over lime green, dark green with brown, dayglo pink   | £200-250 |
| 187 | Volkswagen Karmann-Ghia Coupé red with black roof or green with cream                            | £70-90   | 198 | Rolls Royce Phantom V metallic green & cream or 2-tone grey   | £70-90   |
| 187 | De Tomaso Mangusta 5000 red & white, '7'   | £35-45   | 198 | Rolls Royce Phantom V grey/cream, dark grey/ivory, grey-green/ivory, blue-grey/ivory, grey-green (S Africa)                                       | £250-350 |
| 188 | 4-Berth Caravan green & cream or blue & cream  | £35-45   | 199 | Austin 7 Countryman blue with brown woodwork  | £60-90   |
| 188 | Jensen FF yellow   | £50-70   | 199 | Austin 7 Countryman all-over orange, green with brown woodwork  | £200-240 |
| 189 | Triumph Herald green roof & sides with white centre, or blue with white                          | £70-90   | 200 | Midget Racer R35b   | -        |
| 189 | Triumph Herald various Triumph factory colour schemes  | A        | 200 | Matra 630 blue  | £25-35   |
| 189 | Lamborghini Marzal green & white, red & white, yellow & white, blue & white, dark metallic green | £40-50   | 201 | Racing Car Set 240, 241, 242, 243   | £250-350 |
| 190 | Caravan orange & cream or blue & cream   | £35-45   | 201 | Plymouth Stock Car dark blue  | £40-60   |
| 190 | Monteverdi 375L metallic red   | £35-45   | 202 | Fiat Abarth 2000 orange & white   | £25-30   |
| 191 | Dodge Royal Sedan cream with brown flash, green with black                                       | £90-120  | 202 | Customised Land Rover/Off-road Pick-up yellow   | £20-25   |
| 191 | Dodge Royal Sedan white with blue  | £160-200 | 203 | Customised Range Rover black  | £20-25   |
| 192 | De Soto Fireflite grey with red flash & roof or green with fawn                                  | £100-140 |     |   |          |

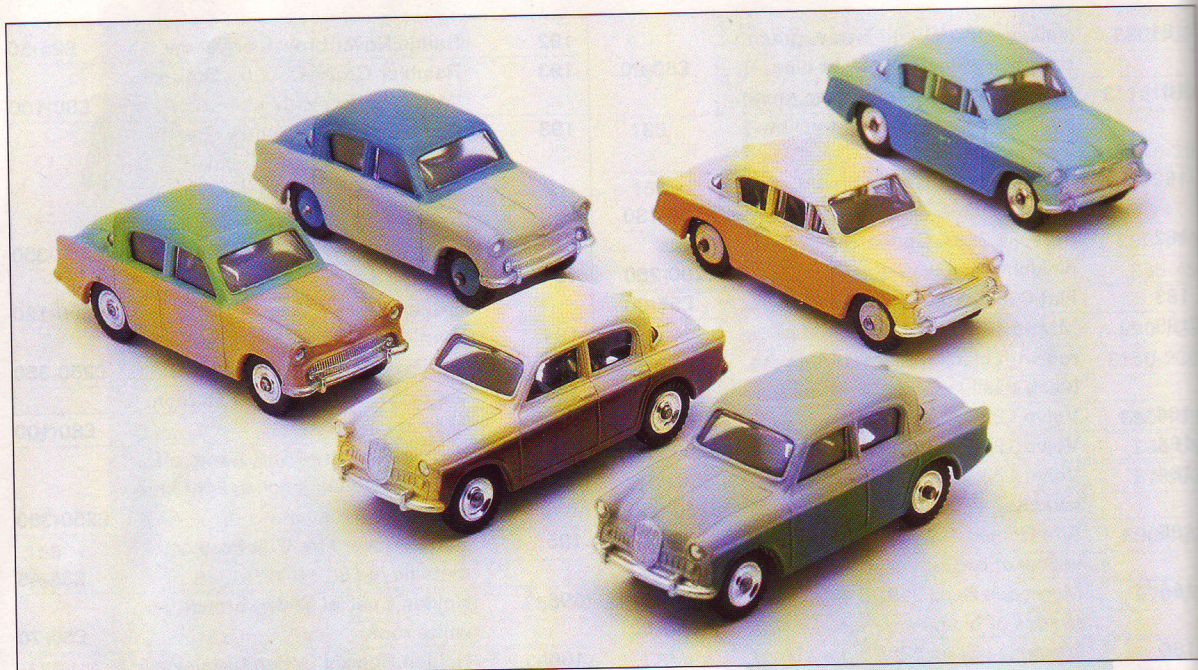


699: military vehicles gift set contains some desirable models.

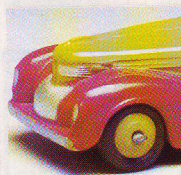
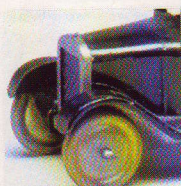


# Dinky toys

Dinky's Rootes:  
166, 168 and 175  
Hillmans and  
Singers.



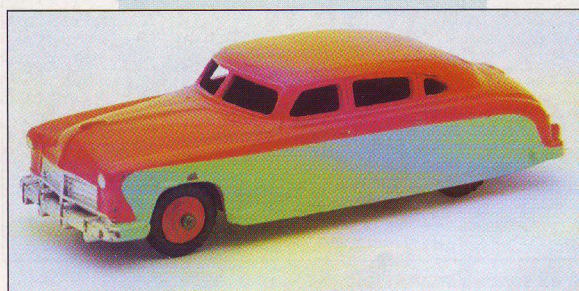
|     |   |        |            |   |          |
|-----|---|--------|------------|---|----------|
| 204 | Ferrari 312P metallic red with white                        | £25-30 | white, red | £25-35  |          |
| 205 | Talbot Lago R23k/230  | -      | 225        | Lotus Formula 1 Racing Car                        | £20-25   |
| 205 | Lotus Cortina Rally white with red                          | £70-90 |            | metallic red, metallic blue                       | £20-25   |
| 206 | Maserati R23n/231   | -      | 226        | Ferrari 312/B2 red, bronze                        | £20-25   |
| 206 | Customised Corvette Stingray red                            | £25-30 | 227        | Beach Buggy yellow with white plastic hood        | £20-25   |
| 207 | Alfa Romeo R23f/232   | -      |            | Super Sprinter blue & orange                      | £20-25   |
| 207 | Triumph TR7 Rally Car white with blue & red stripes         | £30-40 | 228        | Talbot-Lago Racing Car R23k                       | -        |
| 208 | Cooper Bristol R23g/233                                     | -      | 230        | Maserati Racing Car R23n                          | -        |
| 208 | VW Porsche 914 yellow or met. blue                          | £25-30 | 231        | Alfa Romeo Racing Car R23f                        | -        |
| 209 | Ferrari R23h/234  | -      | 232        | Cooper-Bristol Racing Car R23g                    | -        |
| 210 | Vanwall R239  | -      | 233        | Ferrari Racing Car R23h                           | -        |
| 210 | Alfa Romeo 33 Tipo Le Mans dayglo orangey-red, dark blue    | £25-35 | 234        | HWM Racing Car R23j                               | -        |
| 211 | Triumph TR7 Sports Car metallic blue-green, white, red      | £30-45 | 235        | Connaught Racing Car light green                  | £70-90   |
| 212 | Ford Cortina Rally white with black bonnet                  | £70-90 | 236        | Mercedes-Benz Racing Car white, cream, matt white | £80-100  |
| 213 | Ford Capri Rally metallic red, bronze                       | £40-55 | 237        | Dinky Way Gift Set                                | -        |
| 214 | Hillman Imp Rally blue                                      | £70-90 | 238        | Jaguar D-type Racing Car turquoise                | £80-120  |
| 215 | Ford GT Racing Car white                                    | £30-40 | 239        | Vanwall Racing Car green, R210                    | £50-70   |
| 215 | Ford GT Racing Car green                                    | £60-80 | 240        | Cooper Racing Car blue, white stripes             | £50-70   |
| 216 | Dino Ferrari red,metallic blue with black                   | £40-55 | 240        | Cooper Racing Car light blue (S Africa)           | £200-250 |
| 217 | Alfa Romeo Scarabeo OSI red, later dayglo orange            | £25-30 | 240        | Dinky Way Gift Set                                | -        |
| 218 | Lotus Europa yellow & blue, yellow & black                  | £35-50 |            | 211, 255, 382, 412                                | £60-80   |
| 219 | Leyland Jaguar XJ 5.3 Coupé / Big Cat white, Leyland decals | £40-45 | 241        | Lotus Racing Car green                            | £50-70   |
| 220 | Small Open Racing Car R23a                                  | -      | 241        | Lotus Racing Car light green (S Africa)           | £200-250 |
| 220 | Ferrari P5 metallic red                                     | £25-30 | 241        | Silver Jubilee Taxi silver, Union Jack on boot    | £20-25   |
| 221 | 'Speed of the Wind' Racing Car R23e                         | -      | 242        | Ferrari Racing Car red                            | £50-70   |
| 221 | Corvette Stingray bronze                                    | £30-40 | 242        | Ferrari Racing Car light red                      | -        |
| 221 | Corvette Stingray white with black bonnet                   | £25-35 | 243        | BRM Racing Car green or metallic green            | £50-70   |
| 222 | Streamlined Racing Car R23s                                 | -      | 243        | Volvo Police Car white, Police headboard          | 20-25    |
| 222 | Hesketh Racing Car 308E dark blue                           | £20-25 | 244        | Plymouth Police Car dark blue & white, Police     | £20-25   |
| 222 | Hesketh Racing Car 308E                                     | -      | 245        | Superfast Gift Set 131, 153, 188                  | £180-230 |
|     | Olympus Special dark blue                                   | £50-80 | 246        | International GT Gift Set                         | -        |
| 223 | McLaren M8A CanAm white or metallic green                   | £20-25 |            | 187, 215, 216                                     | £150-200 |
| 224 | Mercedes-Benz C111 metallic red,                            | -      | 249        | Racing Cars Gift Set R – Gift Set 4               | -        |
|     |   |        | 249        | World Famous Racing Cars                          | -        |





|     |  |           |
|-----|--|-----------|
|     | 230, 231, 232, 233, 234, 239                                       | £900-1200 |
| 250 | Streamlined Fire Engine R25h                                       | -         |
| 250 | Mini-Cooper 'S' Police Car white, Police on doors                  | £45-55    |
| 251 | Aveling-Barford Diesel Roller R25p                                 | -         |
| 251 | U.S.A. Police Car (Pontiac) white with black roof                  | £45-55    |
| 252 | Bedford Refuse Wagon R25v  | -         |
| 252 | RCMP Car (Pontiac) blue with white front doors                     | £45-55    |
| 253 | Daimler Ambulance R30h   | -         |
| 254 | Austin Taxi R40h   | -         |
| 254 | Police Range Rover white with red stripes                          | £30-40    |
| 255 | Mersey Tunnel Police Van red, Mersey Tunnel in yellow              | £65-75    |
| 255 | Ford Zodiac Police Car white, Police in black                      | £55-70    |
| 255 | Police Mini Clubman blue with white doors, Police in blue on white | £30-35    |
| 256 | Police Patrol Car (Humber Hawk) black, PC 49 number plates         | £100-120  |
| 257 | Canadian Fire Chief's Car (Nash Rambler) red                       | £60-80    |
| 258 | U.S.A. Police Car (De Soto) black with white front doors           | £80-110   |
| 258 | U.S.A. Police Car (Dodge) black with white front doors             | £80-110   |
| 258 | U.S.A. Police Car (Ford Fairlane) black with white front doors     | £80-110   |
| 258 | U.S.A. Police Car (Cadillac 62) black with white front doors       | £80-110   |
| 259 | Fire Engine (Bedford) red, silver ladder                           | £70-90    |
| 260 | Royal Mail Van (Morris J) red with black roof                      | £90-120   |
| 260 | Volkswagen 'Deutsche Bundespost' yellow, black wings               | £120-160  |
| 261 | Telephone Service Van (Morris Z) green with black roof             | £100-130  |
| 261 | Ford Taunus 17M 'Polizei' white with dark green                    | £180-220  |
| 262 | Volkswagen Swiss Post PTT Car as 181, yellow with black            | £200-300  |
| 262 | Volkswagen Swiss Post PTT Car as 129, yellow with black            | £120-160  |
| 263 | Superior Criterion Ambulance white/cream                           | £45-70    |
| 263 | Airport Fire Rescue Tender (ERF) yellow                            | £50-60    |
| 264 | RCMP Patrol Car (Fairlane) dark blue with white front doors        | £70-90    |
| 264 | RCMP Patrol Car (Cadillac 62) dark blue with white front doors     | £80-100   |
| 264 | Rover 3500 Police Car white, yellow stripe                         | £25-30    |
| 265 | Plymouth Taxi (USA) yellow with red roof, fare details in red      | £90-110   |
| 266 | Plymouth Taxi (Canadian) yellow with red roof, '450 Metro Cab'     | £100-130  |
| 266 | ERF Fire Tender red, later metallic red                            | £45-70    |
| 266 | ERF Fire Tender red, white 'Falck'                                 | £55-80    |
| 267 | Superior Cadillac Ambulance white & red, flashing light            | £45-70    |

|      |   |          |
|------|---|----------|
| 267  | Paramedic Truck red, Emergency Rescue...  | £25-30   |
| 268  | Renault Dauphine Minicab red, 'Kenwood' etc   | £90-120  |
| 268  | Range Rover Ambulance white   | £25-40   |
| 269  | Jaguar Motorway Police Car white  | £90-110  |
| 269  | Police Accident Unit (Ford Transit) white with red stripes, Police in white on blue | £35-40   |
| 270  | AA Motorcycle Patrol  | -        |
| 270  | Ford Panda Police Car blue with white doors, Police on doors & roof                 | £50-60   |
| 271  | TS Motor Cycle Patrol as 44b but with 'T.S.' badge                                  | £200-250 |
| 271  | Ford Transit Fire Appliance red   | £50-70   |
| 271  | Ford Transit Fire Appliance 'Falck' red, Falck Zonen                                | £70-90   |
| 272  | ANWB Motor Cycle Patrol as 44b but with 'A.N.W.B.' badge                            | £200-250 |
| 272  | Police Accident Unit (Transit) white, 'Police' in black                             | £35-40   |
| 273  | RAC Patrol Mini Van blue with white roof  | £130-170 |
| 274  | AA Patrol Mini Van yellow, Patrol 'AA' Service                                      | £110-150 |
| 274  | AA Patrol Mini Van yellow, white roof   | £130-175 |
| 274* | Mini Van 'Joseph Mason Paints' maroon, Joseph Mason Paints                          | £500-600 |
| 274  | Ford Transit Ambulance white  | £30-35   |
| 275  | Brinks Armoured Car (with gold) light grey, 'Brink's' decals                        | £110-140 |
| 275* | Armoured Car 'Manriques' grey, 'Luis R Picasso Manriques'                           | £550-750 |
| 275  | Brinks Truck (no gold) dark grey, stickers: 'Brinks'                                | £45-70   |
| 276  | Airport Fire Tender (Bedford) red   | £45-70   |
| 276  | Ford Transit Ambulance white  | £30-35   |
| 277  | Superior Criterion Ambulance/ flashing light metallic blue & white                  | £55-80   |
| 277  | Police Land Rover dark blue & white   | £20-30   |
| 278  | Vauxhall Victor Ambulance white   | £60-80   |
| 278  | Plymouth Yellow Cab yellow, Yellow Cab on doors                                     | £20-25   |
| 279  | Aveling-Barford Diesel Roller orange with grey, or yellow with black                | £40-60   |
| 280  | Delivery Van red or blue  | £50-75   |
| 280  | Delivery Van olive drab   | £150-180 |
| 280  | Observation Coach R29f  | -        |
| 280  | Midland Mobile Bank white & silver  | £90-120  |
| 281  | Luxury Coach R29g   | -        |
| 281  | Fiat 2300 Pathé News Camera Car black   | £90-110  |
| 281  | Military Hovercraft olive drab  | £25-30   |

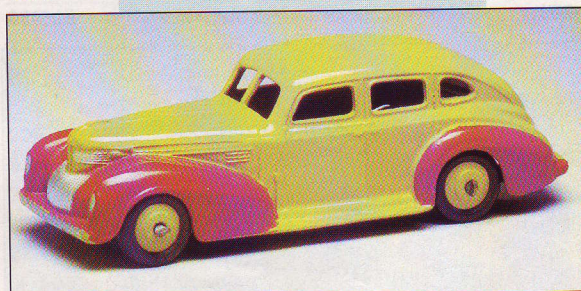
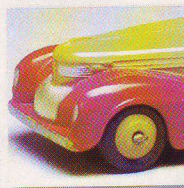
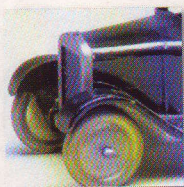


169: the Hudson Commodore Sedan



# Dinky toys

|      |  |          |
|------|--|----------|
| 282  | Duple Roadmaster Coach R29h  | -        |
| 282  | Austin 1800 Taxi blue with white, Taxi   | £45-70   |
| 282  | Land Rover Fire Appliance red  | £30-35   |
| 282  | Land Rover Fire Appliance red, stickers: 'Falck'                                   | £45-55   |
| 283  | B.O.A.C. Coach dark blue with white roof   | £80-100  |
| 283  | Single Decker Bus 'Red Arrow' metallic red, later red                              | £30-50   |
| 284  | London Austin Taxi black or dark blue  | £30-40   |
| 285  | Merryweather Marquis Fire Engine metallic red, red                                 | £45-70   |
| 285  | Merryweather Marquis Fire Engine metallic red, red 'Falck'                         | £70-90   |
| 286  | Ford Transit Fire Appliance metallic red, then red                                 | £55-80   |
| 286  | Ford Transit Fire Appliance metallic red, red, 'Falck Zonen'                       | £80-100  |
| 287  | Police Accident Unit (Transit) orange & cream, white & red                         | £55-80   |
| 288  | Superior Cadillac Ambulance white, red lower panels                                | £40-50   |
| 288  | Superior Cadillac Ambulance 'Falck' black with white roof, red with white, 'Falck' | £90-110  |
| 289  | Routemaster Bus (Tern Shirts) red, 'Tern Shirts'                                   | £110-130 |
| 289  | Routemaster Bus (Schweppes) red, 'Schweppes'                                       | £90-110  |
| 289* | Routemaster Bus (London Stores) red, 'Festival of London Stores'                   | £110-140 |
| 289  | Routemaster Bus (Esso Tyres) red, 'Esso Safety Grip Tyres'                         | £70-90   |
| 289* | Routemaster Bus (Dinky Toys) gold, 'Meccano Dinky Toys'/'Multikit'                 | A        |
| 289* | Routemaster Bus (Tussaud's) red, 'Visit Madame Tussaud's'                          | £80-100  |
| 289* | Routemaster Bus (Thollenbeek's) gold, 'Thollenbeek & Fils'                         | A        |
| 290  | Double Deck Bus  | -        |
| 290  | SRN-6 Hovercraft metallic red, red   | £25-30   |
| 291  | Double Deck Bus (Exide) red, 'Exide'   | £110-140 |
| 291  | Atlantean City Bus orange & white, 'Kenning'                                       | £45-55   |
| 291* | Atlantean City Bus white, 'London & Manchester Assurance'                          | A        |
| 292  | Atlantean Bus red & white, 'Ribble' or 'Corporation Transport'                     | £90-120  |
| 293  | Atlantean Bus green & white, 'Corporation Transport'                               | £90-120  |
| 293  | Swiss Postal Bus yellow with white roof, PTT                                       | £25-30   |
| 294  | Police Vehicles Gift Set   |          |



A 39 series Sedan in rare yellow and red finish.

|      |  |           |
|------|--|-----------|
|      | 250, 254, 272, 287   | £110-150  |
| 295  | Atlas Kenebrake Bus light blue & grey, light blue              | £65-95    |
| 295  | Atlantean Bus (Yellow Pages) yellow, 'Yellow Pages'            | £40-55    |
| 296  | Duple Viceroy 37 Luxury Coach metallic blue                    | £20-25    |
| 297  | Police Vehicles Gift Set 250, 255, 287                         | £150-180  |
| 297  | Silver Jubilee Bus silver, 'National' 'Silver Jubilee 1977'    | £20-25    |
| 297* | Silver Jubilee Bus (Woolworths) silver, 'Woolworths'           | £30-35    |
| 298  | Emergency Services Gift Set 258, 263, 276, 277, 007, 008       | £800-1000 |
| 299  | Post Office Services Gift Set 260, 261, 750, 011, 012          | £400-500  |
| 299  | Motorway Services Gift Set 257, 263, 269, 276, 434             | £900-1100 |
| 299  | Crash Squad Gift Set 244, 732                                  | £45-55    |
| 300  | Massey Harris/Ferguson Tractor R27a                            | -         |
| 300  | London Scene Souvenir Set 289 (Esso), 284                      | £60-80    |
| 301  | Field Marshall Tractor R27a                                    | -         |
| 303  | Commando Squad Gift Set 667, 687, 732 (olive drab)             | £70-100   |
| 304  | Fire Rescue Gift Set 195, 282, 384                             | £70-100   |
| 305  | David Brown Tractor red & yellow, white                        | £70-100   |
| 308  | Leyland 384 Tractor metallic red, blue                         | £70-90    |
| 309  | Star Trek Gift Set 357, 358                                    | £70-90    |
| 310  | Farm Tractor and Hay Rake R27ak                                | -         |
| 319  | Week's Tipping Farm Trailer red & yellow                       | £25-30    |
| 320  | Halesowen Harvest Trailer R27b                                 | -         |
| 321  | Massey-Harris Manure Spreader R27c                             | -         |
| 322  | Disc Harrow R27h   | -         |
| 323  | Triple Gang Mower R27j   | -         |
| 324  | Hay Rake R27k  | -         |
| 325  | David Brown Tractor and Disc Harrow 305, 224                   | £70-90    |
| 340  | Land Rover R27d  | -         |
| 341  | Land Rover Trailer R27m  | -         |
| 342  | Moto-Cart R27g   | -         |
| 342  | Austin Mini-Moke metallic green                                | £35-40    |
| 343  | Farm Produce Wagon R30n  | -         |
| 344  | Estate Car R27f  | -         |
| 344  | Land Rover metallic red or metallic blue                       | £15-20    |
| 350  | Tiny's Mini-Moke red, white plastic canopy with yellow stripes | £90-110   |
| 351  | UFO Interceptor metallic green                                 | £45-70    |
| 352  | Ed Straker's Car red   | £45-70    |
| 352  | Ed Straker's Car gold plated, yellow                           | £80-100   |
| 353  | Shado 2 Mobile green   | £60-80    |
| 353  | Shado 2 Mobile blue  | £120-150  |
| 354  | Pink Panther's Jet Car pink                                    | £35-50    |
| 355  | Lunar Roving Vehicle metallic blue                             | £30-40    |
| 357  | Klingon Battle Cruiser blue & white                            | £35-40    |
| 358  | USS Enterprise white   | £35-40    |
| 359  | Eagle Transporter white & metallic green or blue & white       | £60-80    |
| 360  | Eagle Freighter white with red                                 | -         |





706 and 708  
Viscounts in  
Air France and  
BEA colours.

|      |   |          |      |  |          |
|------|---|----------|------|--|----------|
|      | carrying frame, metallic green legs                                     | £60-80   | 407  | Ford Transit (Kenwood) blue with white roof, 'Kenwood'               | £90-110  |
| 361  | Zygon / Galactic War Chariot metallic green & silver                    | £35-40   | 407  | Ford Transit (Hertz) yellow, 'Hertz'                                 | £70-90   |
| 362  | Trident Star Fighter black, gold  | £35-40   | 408  | Big Bedford Lorry R522   | -        |
| 363* | Cosmic Interceptor red & white  | £35-40   | 409  | Bedford Articulated Lorry R521                                       | -        |
| 363  | Zygon Patroller red & white   | £35-40   | 410  | Bedford End Tipper R25m  | -        |
| 364  | NASA Space Shuttle (booster rocket) white, stickers: 'United States'    | £65-85   | 410  | Bedford Van (Royal Mail) red   | £30-40   |
| 364  | NASA Space Shuttle (no booster rocket) white, stickers: 'United States' | £25-35   | 410* | Bedford Van (Simpsons) red with black upper                          | £70-90   |
| 366  | NASA Space Shuttle white  | £25-30   | 410* | Bedford Van (John Menzies) dark blue                                 | £30-40   |
| 367  | Space Battle Cruiser white  | £35-40   | 410* | Bedford Van (Belaco) bronze with black roof                          | £80-100  |
| 367* | Space Battle Cruiser dark blue  | £35-40   | 410* | Bedford Van (Danish Post) yellow                                     | £80-100  |
| 368  | Zygon Marauder white  | £35-40   | 410* | Bedford Van (Marley Tiles) red                                       | £40-50   |
| 370  | Dragster Set yellow & red   | £40-50   | 410* | Bedford Van (MJ Hire) white  | £35-45   |
| 371  | USS Enterprise white  | £20-25   | 411  | Bedford Truck R25w   | -        |
| 372  | Klingon Battle Cruiser metallic blue                                    | £20-25   | 412  | Austin Wagon R30j  | -        |
| 380  | 'Convoy' Skip Truck yellow & orange                                     | £15-20   | 412  | Bedford AA Van light yellow  | £25-30   |
| 381  | Garden Roller R105a   | -        | 413  | Austin Covered Wagon R30s  | -        |
| 381  | 'Convoy' Farm Truck yellow & brown                                      | £15-20   | 414  | Dodge Rear Tipping Wagon R30m  | -        |
| 382  | Wheelbarrow R105b   | -        | 415  | Mechanical Horse & Open Wagon R33w                                   | -        |
| 382  | 'Convoy' Dumper Truck red & grey  | £15-20   | 416  | Ford Transit Van Motorway Services yellow                            | £35-45   |
| 383  | Four-Wheeled Hand Truck R105c   | -        | 416* | Ford Transit Van (1m Transits) yellow, '1,000,000 Transits'          | £130-175 |
| 383  | 'Convoy' N.C.L. Truck yellow  | £30-35   | 417  | Leyland Comet Lorry R531   | -        |
| 384  | Grass Cutter R105e  | -        | 417  | Ford Transit Van Motorway Services yellow                            | £35-45   |
| 384  | 'Convoy' Fire Rescue Truck red, white escape                            | £15-20   | 418  | Leyland Comet Lorry (Hinged Tailboard) R532                          | -        |
| 385  | Sack Truck R107a  | -        | 419  | Leyland Comet Wagon (Portland Cement) R533                           | -        |
| 385  | 'Convoy' Royal Mail Truck red   | £25-30   | 420  | Leyland Forward Control Lorry R25r                                   | -        |
| 386  | Lawn Mower R751   | -        | 421  | Hindle-Smart Electric Articulated Lorry R30w                         | -        |
| 390  | Customised Transit Van dark blue, light blue                            | £25-30   | 422  | Thames Flat Truck R30r   | -        |
| 398  | Farm Equipment Gift Set R1  | -        | 424  | Commer Convertible Articulated Truck yellow, grey, white stake sides | £170-190 |
| 399  | Farm Tractor and Trailer Set 300, 428                                   | £120-150 | 425  | Bedford TK Coal Wagon red  | £120-160 |
| 399  | 'Convoy' Gift Set 380, 381, 382   | £35-45   | 428  | Large Trailer R551   | -        |
| 400  | BEV Electric Truck R14a   | -        | 429  | Trailer R25g   | -        |
| 401  | Coventry Climax Fork Lift Truck R14c                                    | -        | 430  | Commer Breakdown Lorry R25x  | -        |
| 402  | Bedford Coca Cola Lorry red with white roof, 'Coca Cola'                | £150-180 | 430  | Johnson 2-ton Dumper orange & red                                    | £25-30   |
| 404  | Conveyancer/Climax Fork Lift Truck red & yellow, orange & yellow        | £25-35   | 431  | Guy 4-ton Lorry R511   | -        |
| 405  | Universal Jeep R25y   | -        | 431  | Guy Warrior 4-ton Lorry tan & green, cream & green, red & dark green | £50-500  |
| 405  | Universal Jeep off white, green (S Africa)                              | £200-300 | 432  | Guy Flat Truck R512  | -        |
| 406  | Commer Articulated Truck yellow cab, grey rear                          | £125-130 |      |  |          |



# Dinky toys

235: the HWM racing car, one of an interesting series from Dinky.



|     |   |          |
|-----|---|----------|
| 432 | Guy Warrior Flat Truck green (shades of) & red  | £300-400 |
| 432 | Foden Tipping Lorry white cab, yellow rear, red chassis   | £35-45   |
| 433 | Guy Flat Truck with Tailboard R513  | -        |
| 434 | Bedford TK Crash Truck white with green flash, red or metallic red with black roof & light grey             | £90-110  |
| 435 | Bedford TK Tipper light grey cab with blue roof & red back, yellow with or without black roof & yellow back | £80-85   |
| 435 | Bedford TK Tipper white, silver with blue sides   | £150-200 |
| 436 | Atlas Copco Compressor Lorry yellow   | £55-80   |
| 437 | Muir Hill 2WL Loader red or yellow  | £20-30   |
| 438 | Ford D800 Tipper Truck (opening doors) white/blue, red/yellow, all red                                      | £35-45   |
| 439 | Ford D800 Snow Plough & Tipping Truck blue / red, blue / light blue, red / red, yellow plough               | £45-70   |
| 440 | Petrol Tanker 'Mobilgas' R30p   | -        |
| 440 | Ford D800 Tipper Truck (no opening doors) all-red or red / yellow back                                      | £35-45   |
| 441 | Petrol Tanker 'Castrol' R30pa   | -        |
| 442 | Petrol Tanker 'Esso' R30pb  | -        |
| 442 | Land Rover Breakdown Crane white & red  | £25-30   |
| 442 | Land Rover Breakdown Crane 'Falck' white & red or all red, 'Falck'  | £40-45   |
| 443 | Petrol Tanker 'National Benzole' yellow   | £100-130 |
| 448 | Chevrolet El Camino Pick-Up/Trailers green & white with red trailers  | £220-280 |
| 449 | Chevrolet El Camino Pick-Up light green with white sides  | £80-100  |
| 449 | Chevrolet El Camino Pick-Up (S Africa) turquoise, brown, cream & turquoise, cream & brown                   | £300-350 |
| 449 | Johnson Road Sweeper (no opening doors) orange/met. green, all yellow                                       | £45-55   |
| 450 | Trojan Van 'Esso' R31a  | -        |
| 450 | Bedford TK Box Van 'Castrol' green with white panels  | £120-160 |



## Fact File

At last a few of the deeply unloved late 1970s Dinky Toys are beginning to creep up a little in value. Star Trek and prototypes are now sought after.

|      |   |            |
|------|---|------------|
| 451  | Trojan Van 'Dunlop' R31b  | -          |
| 451  | Johnson Road Sweeper (opening doors) orange with metallic green rear  | £45-55     |
| 451* | Johnson Road Sweeper all yellow, silver chassis, Johnson decals   | £120-150   |
| 452  | rojan Van 'Chivers' R31c  | -          |
| 453  | Trojan Van 'Oxo' R31d   | -          |
| 454  | Trojan Van 'Cydrax' light green   | £110-150   |
| 455  | Trojan Van 'Brook Bond Tea' red   | £110-150   |
| 465  | Morris Van 'Capstan' duotone blue   | £170-200   |
| 470  | Austin Van 'Shell-BP' green cab, red back   | £100-130   |
| 471  | Austin Van 'Nestlé's' red   | £100-130   |
| 472  | Austin Van 'Raleigh Cycles' dark green  | £130-160   |
| 475  | Ford Model T 1908 blue body   | £45-70     |
| 476  | Morris Oxford (Bull Nose) 1913 yellow body, blue chassis  | £55-80     |
| 477  | Parsley's Car green body, black chassis   | £80-120    |
| 480  | Bedford Van 'Kodak' yellow  | £100-120   |
| 481  | Bedford Van 'Ovaltine' blue   | £100-120   |
| 482  | Bedford Van 'Dinky Toys' cream & orange   | £100-120   |
| 485  | Ford Model T with Santa Claus red & white   | £70-100    |
| 486  | Dinky Beats Morris Oxford pink with green chassis   | 90-120     |
| 490  | Electric Dairy Van 'Express Dairy' R30v   | -          |
| 491  | Electric Dairy Van 'N.C.B.' R30v  | -          |
| 492  | Loudspeaker Van R34c  | -          |
| 492  | Election Mini Van white   | £200-250   |
| 499  | Commercial Vehicles   |            |
| 501  | Foden Diesel 8-wheel Wagon (1st grille) brown, dark blue or light grey with black chassis, grey with red, some red with black, red with fawn back, some light blue with dark blue, silver flash on sides or contrast colour | £450-600   |
| 501  | Foden Diesel 8-wheel Wagon (2nd grille) red with fawn back, R901  | £220-280   |
| 501  | Foden Diesel 8-wheel Wagon (2nd grille) dark blue with light,   | £450-600   |
| 502  | Foden Flat Truck (1st grille) green with black chassis, light blue with dark blue, range cab/chassis with light green back, blue with red, R902   | £400-500   |
| 502  | Foden Flat Truck (2nd grille) orange with green back, red with green  | £250-350   |
| 502  | Foden Flat Truck (2nd grille) blue with red, red with green, yellow with green  | £1000-1250 |
| 503  | Foden Flat Truck, Tailboard (1st grille) grey body & cab on blue chassis, lt grey body and cab on dk blue chassis, red with black chassis, dark green cab/chassis with lt green back, dk blue with orange, R903             | £650-750   |
| 503  | Foden Flat Truck, Tailboard (2nd grille) blue with orange back  | £280-350   |
| 503  | Foden Flat Truck, Tailboard   |            |



|     |   |            |
|-----|---|------------|
|     | (2nd grille) blue with yellow, orange with yellow, light blue with fawn   | £550-750   |
| 503 | Foden Flat Truck, Tailboard (2nd grille) all yellow, dark green with light green  | £850-1000  |
| 504 | Foden 14-ton Tanker (1st grille) red with fawn tank or dark blue with light. R941   | £400-500   |
| 504 | Foden 14-ton Tanker (2nd grille) red with fawn tank, duotone blue   | £300-400   |
| 504 | Foden 14-ton Tanker 'Mobilgas' red  | £300-400   |
| 505 | Foden Flat Truck with Chains (1st grille) green, maroon. Maroon model fetched £12,000 at auction and green £5,175 in 2003. R905 | £3000-7000 |
| 505 | Foden Flat Truck with Chains (2nd grille) green or maroon, red with grey back   | £260-320   |
| 511 | Guy 4-ton Lorry grey with red wings & chassis, green, maroon or brown with black, R911, 431                                     | £450-650   |
| 511 | Guy 4-ton Lorry 2-tone blue or red & fawn   | £50-350    |
| 512 | Guy Flat Truck yellow, maroon, brown or grey with black wings/chassis   | £450-650   |
| 512 | Guy Flat Truck blue with red back, orange with green, red with blue, dark green with light green, orange with green, R912, 432  | £250-350   |
| 513 | Guy Flat Truck with Tailboard yellow, grey, green, with black wings & chassis, R913, 433  | £450-650   |
| 513 | Guy Flat Truck with Tailboard 2-tone green or dark blue with orange   | £250-350   |
| 514 | Guy Van 'Slumberland' red   | £300-400   |
| 514 | Guy Van 'Lyons' dark blue   | £1000-1300 |
| 514 | Guy Van 'Weetabix' yellow   | £100-1400  |
| 514 | Guy Van 'Spratts' red & cream, R917   | £300-450   |
| 521 | Bedford Articulated Lorry red or yellow with black wings, R409, 921   | £100-150   |
| 522 | Big Bedford Lorry maroon with fawn, R408, 922   | £100-125   |
| 522 | Big Bedford Lorry blue with yellow  | £150-200   |
| 531 | Leyland Comet Lorry red with yellow or brown back, R417, 931  | £40-180    |
| 531 | Leyland Comet Lorry blue with yellow or brown, yellow with light green  | £200-250   |
| 532 | Leyland Comet Lorry, Hinged Tailboard green cab with orange   |            |



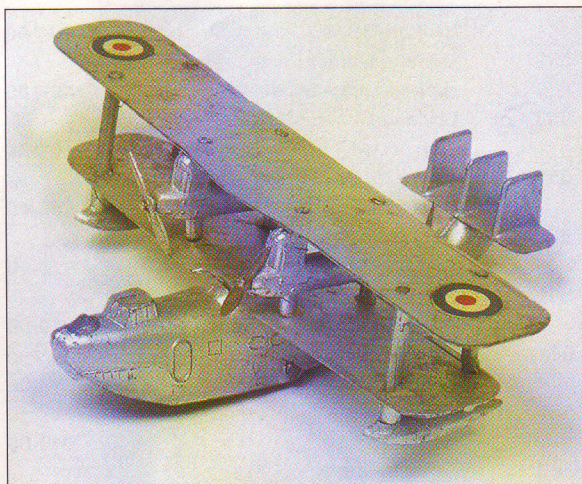
The much sought-after 28 Series van (Guardian livery).

|     |   |          |
|-----|---|----------|
|     | back, R418, 932   | £110-140 |
| 532 | Leyland Comet Lorry, Hinged Tailboard duotone blue  | £140-180 |
| 533 | Leyland Cement Wagon yellow, 'Ferrocete', R419, 933                                       | £140-170 |
| 551 | Trailer/Large Trailer green, grey or red, R428, 951                                       | £35-40   |
| 555 | Fire Engine with Extending Ladder red, R955   | £70-90   |
| 561 | Blaw-Knox Bulldozer red, cream & grey, R961   | £70-90   |
| 561 | Blaw-Knox Bulldozer orange with green blade   | £250-300 |
| 562 | Muir-Hill Dump Truck yellow, cream, R962  | £40-60   |
| 563 | (Blaw-Knox) Heavy Tractor red or orange, R963   | £40-60   |
| 563 | (Blaw-Knox) Heavy Tractor dark blue   | £80-100  |
| 564 | Elevator Loader yellow and blue, R964   | £70-100  |
| 571 | Coles Mobile Crane yellow & black, R971   | £70-90   |
| 581 | Horse Box maroon, 'British Railways' on sides & cab roof, R980, 981                       | £100-140 |
| 581 | Horse Box maroon, 'Express Horse Van' on sides  | £380-430 |
| 582 | Pullmore Car Transporter, with ramp light then dark blue with fawn tracks, all blue, R982 | £100-150 |
| 591 | AEC Tanker 'Shell Chemicals' red cab, yellow tank top, R991                               | £130-170 |
| 600 | Armoured Corps Personnel R150 (post-war)  | -        |
| 601 | Austin Para Moke green  | £40-60   |
| 602 | Armoured Command Car green, later blue-green, US star                                     | £30-40   |
| 603 | Army (Personnel) Private Seated tan with black beret                                      | £30-50   |
| 604 | Royal Tank Corps Private R150b (US export only)   | -        |
| 604 | Land Rover Bomb Disposal Unit green with orange panels                                    | £45-70   |
| 606 | Royal Artillery Personnel R160 (US export only)   | -        |
| 608 | Royal Artillery Seated Gunner R160b (US export only)                                      | -        |
| 609 | 105mm Howitzer with Gun Crew olive drab   | £25-35   |
| 612 | Commando Jeep olive drab  | £25-35   |
| 615 | US Jeep with 105mm Howitzer olive drab  | £35-45   |
| 616 | AEC Artic Transporter & Chieftain olive drab  | £55-70   |
| 617 | Volkswagen KDF and PAK Anti-Tank Gun grey   | £50-75   |
| 618 | AEC Artic Transporter and Helicopter olive drab   | £55-80   |
| 619 | Bren Gun Carrier and Anti Tank Gun olive drab   | £35-45   |
| 620 | Transport Wagon and Driver R151b (US export only)   | -        |
| 620 | Berliet Missile Launcher olive drab   | £90-120  |
| 621 | 3-Ton Army Wagon (Bedford RL) olive drab  | £60-80   |



# Dinky toys

The 60h Singapore Flying boat of 1936 looks like it has flown out from the pages of 'Biggles and the Cruise of the Condor'!



|     |  |          |
|-----|--|----------|
| 622 | 10-Ton Army Wagon (Foden) olive drab                               | £70-90   |
| 622 | Bren Gun Carrier olive drab  | £20-30   |
| 623 | Army Covered Wagon (Bedford QL) olive drab                         | £45-70   |
| 624 | Daimler Military Ambulance R30hm                                   | -        |
| 625 | Austin Covered Wagon R30sm   | -        |
| 625 | 6-Pounder Anti Tank Gun olive drab                                 | £20-25   |
| 626 | Military Ambulance (Ford) olive drab                               | £45-70   |
| 640 | Bedford Truck R25wm  | -        |
| 641 | Army 1-Ton Cargo Truck (Humber) olive drab                         | £40-60   |
| 642 | RAF Pressure Refueller blue - grey                                 | £90-120  |
| 643 | Army Water Carrier (Austin) olive drab                             | £70-90   |
| 650 | Light Tank R152 (US Export only)                                   | -        |
| 651 | Centurion Tank olive drab  | £60-80   |
| 654 | 155mm Mobile Gun olive drab  | £20-30   |
| 656 | 88mm Gun grey  | £20-30   |
| 660 | Tank Transporter (Thornycroft Antar) olive drab                    | £90-120  |
| 661 | Recovery Tractor (Scammell) olive drab                             | £90-120  |
| 662 | Static 88mm Gun with crew grey                                     | £20-30   |
| 665 | 'Honest John' Missile Launcher olive drab, later with black        | £100-120 |
| 666 | Missile Erector with Missile and Platform olive drab               | £160-220 |
| 667 | Missile Servicing Platform Vehicle olive drab                      | £120-150 |
| 667 | Armoured Patrol Car olive drab                                     | £20-30   |
| 668 | Foden Army Truck olive drab  | £30-40   |
| 669 | U.S. Army Jeep (see 405) olive drab                                | £200-250 |
| 670 | Armoured Car (Daimler) olive drab                                  | £25-30   |
| 671 | Reconnaissance Car R152b (US Export only)                          | -        |
| 671 | Mk1 Corvette white hull with black stripes                         | £15-20   |
| 672 | U.S. Army Jeep R153a, (US Export only)                             | -        |
| 672 | O.S.A. Missile Boat light grey hull with white & black             | £15-20   |
| 673 | Scout Car (Daimler) olive drab                                     | £25-30   |
| 673 | Submarine Chaser grey hull with white & black                      | £15-20   |
| 674 | Austin Champ olive drab  | £40-60   |
| 674 | Austin Champ white, U N  | £350-400 |
| 674 | Coastguard Amphibious Missile Launch white with blue, red & yellow | £15-20   |



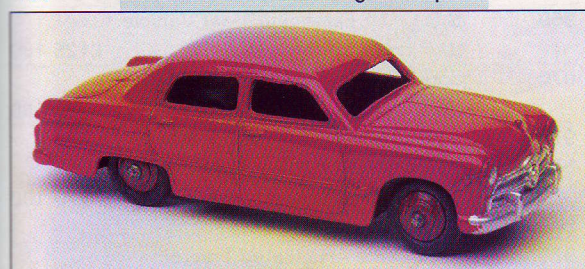
## Fact File

Dinky's military range continues to have a very strong appeal with both Dinky and army collectors. Some trucks are priced considerably over commercial equivalents.

|     |   |          |
|-----|---|----------|
| 675 | U.S. Army Staff Car R139am, (US Export only)  | -        |
| 675 | Motor Patrol Boat grey, cream, black & red  | £15-20   |
| 676 | Armoured Personnel Carrier (Alvis) olive drab   | £40-70   |
| 676 | Daimler Armoured Car (speedwheels) olive drab   | £20-25   |
| 677 | Armoured Command Vehicle (AEC) olive drab   | £50-70   |
| 677 | Task Force Set 680, 681, 682  | £35-45   |
| 678 | Air Sea Rescue Launch black with grey & yellow  | £15-20   |
| 680 | Ferret Armoured Car olive drab or tan   | £10-15   |
| 681 | D.U.K.W. olive drab   | £10-15   |
| 682 | Stalwart Load Carrier olive drab  | £10-15   |
| 683 | Chieftain Tank olive drab   | £20-35   |
| 686 | 25-Pounder Field Gun olive drab   | £15-25   |
| 687 | Trailer for 25-Pounder Field Gun olive drab   | £15-20   |
| 687 | 'Convoy' Army Truck green   | £15-20   |
| 688 | Field Artillery Tractor (Morris) olive drab   | £30-50   |
| 689 | Medium Artillery Tractor (Leyland) olive drab   | £80-110  |
| 690 | Mobile A.A. Gun R161b, (US Export only)   | -        |
| 690 | Scorpion Tank olive drab  | £20-15   |
| 691 | Field Gun Unit R162, (US Export only)   | -        |
| 691 | 'Striker' Anti-Tank Vehicle (Alvis) olive drab  | £30-50   |
| 692 | 5.5in Medium Gun olive drab   | £30-50   |
| 692 | Leopard Tank grey   | £30-50   |
| 693 | 7.2in Howitzer olive drab   | £30-50   |
| 694 | Hanomag Tank Destroyer grey   | £30-50   |
| 695 | Howitzer and Tractor 689, 693   | £120-160 |
| 696 | Leopard Anti-Aircraft Tank grey   | £30-50   |
| 697 | 25-Pounder Field Gun Set 686, 687, 688  | £80-110  |
| 698 | Tank Transporter and Tank 651, 660  | £130-160 |
| 699 | Leopard Recovery Tank grey-green  | £30-50   |
| 699 | Military Vehicles Gift Set R - Gift Set 1   | -        |
| 700 | Seaplane R63b   | -        |
| 700 | Spitfire MkII RAF Diamond Jubilee chromed, on plinth  | £100-120 |
| 701 | Shetland Flying Boat silver, G-AGVD   | £400-500 |
| 702 | D.H. Comet Jet Airliner B.O.A.C. white & blue with silver, white fin, G-ALYV                    | £100-140 |
| 702 | D.H. Comet Jet Airliner B.O.A.C. white & blue with silver, G-ALYV, later G-ALYX, fin later blue | £120-150 |
| 704 | Avro York Airliner R70a   | -        |
| 705 | Viking Airliner R70c  | -        |
| 706 | Vickers Viscount Airliner Air France Air France livery  | £110-150 |
| 708 | Vickers Viscount Airliner B.E.A. B.E.A. livery, G-AOJA  | £110-150 |
| 710 | Beechcraft S.35 Bonanza white/red, yellow/bronze, white/blue/red                                | £45-60   |
| 712 | U.S. Army T-42A drab green  | £60-80   |
| 715 | Bristol 173 Helicopter light blue/  | -        |



|      |  |          |
|------|--|----------|
|      | green, G-AUXR  | £40-55   |
| 715  | Beechcraft C55 Baron white with yellow wingtips, red with yellow           | £35-45   |
| 716  | Westland Sikorsky S51 Helicopter dark red, G-ATWX                          | £35-45   |
| 717  | Boeing 737 white with white or blue engines                                | £50-70   |
| 718  | Hawker Hurricane MkIIc grey with dark green shading                        | £45-70   |
| 719  | Spitfire MkII green with brown shading                                     | £45-70   |
| 721  | Junkers Ju.87B Stuka service green upper surfaces                          | £45-70   |
| 722  | Hawker Harrier metallic blue with variable green shading                   | £70-90   |
| 723  | Hawker Siddeley HS125 Executive Jet white/yellow, white/met. blue,         | £35-50   |
| 724  | Sea King Helicopter white/metallic blue                                    | £50-70   |
| 725  | F-4K Phantom II ultramarine blue   | £80-100  |
| 726  | Messerschmitt Bf.109E desert sand with varying spots of green              | £80-100  |
| 726  | Messerschmitt Bf.109E dark grey-green with yellow nose, etc                | £150-180 |
| 727  | U.S. Air Force F-4 Phantom II greyish brown with olive green camouflage    | £250-300 |
| 728  | R.A.F. Dominie mid-metallic blue   | £40-60   |
| 729  | Panavia Multi-Role Combat Aircraft grey with green camouflage              | £40-60   |
| 730  | Tempest II Fighter R70b  | -        |
| 730  | U.S. Navy Phantom II mid-grey, white undersurfaces                         | £80-100  |
| 731  | Twin-Engined Fighter R70d  | -        |
| 731  | S.E.P.E.C.A.T. Jaguar light metallic blue with green camouflage            | £40-60   |
| 732  | Gloster Meteor Twin-Jet Fighter R70e                                       | -        |
| 732  | Bell Police Helicopter white with blue & orange                            | £40-50   |
| 732* | M*A*S*H Helicopter green, stickers: M*A*S*H                                | £80-100  |
| 733  | Shooting Star Jet Fighter R70f   | -        |
| 733  | F-4K Phantom Der Bundesluftwaffe dark grey with matt grey/green camouflage | £120-150 |
| 734  | Supermarine Swift grey & dark green camouflage                             | £35-40   |
| 734  | P-47 Thunderbolt gloss silver with gloss black                             | £130-170 |
| 735  | Gloster Javelin Delta Wing Fighter grey & dark green camouflage            | £35-45   |
| 736  | Hawker Hunter grey & dark green camouflage                                 | £30-40   |
| 736  | Bundesmarine Sea King Helicopter   |          |



139a Ford Fordor in early solid colour finish.

|     |  |           |
|-----|--|-----------|
|     | grey with red engine casting & tailfin                 | £60-90    |
| 737 | P.1B Lightning Fighter silver, metallic silver grey    | £50-70    |
| 738 | D.H. 110 Sea Vixen Fighter medium sea grey             | £35-45    |
| 739 | A6M5 Zero-Sen metallic blue-green                      | £60-80    |
| 741 | Spifire MkII as 719                                    | £60-80    |
| 749 | Avro Vulcan Delta Wing Bomber only sold as 992         | -         |
| 750 | Telephone Box R12c                                     | -         |
| 751 | Police Box R42a  | -         |
| 751 | Lawn Mower green & red, R386                           | £80-100   |
| 752 | Goods Yard Crane yellow with blue base, R973           | £40-60    |
| 753 | Police Controlled Crossing grey base, black & white    | £80-100   |
| 754 | Pavement Set grey & fawn                               | £40-60    |
| 755 | Lamp Standard Single Arm grey & fawn                   | £20-30    |
| 756 | Lamp Standard Double Arm grey & fawn                   | £25-40    |
| 760 | Pillar Box (EIIR) red & black                          | £25-30    |
| 763 | Posters for Road Hoardings various                     | £25-30    |
| 764 | Posters for Road Hoardings various                     | £25-30    |
| 765 | Road Hoardings green                                   | £60-80    |
| 766 | British Road Signs Country Set A                       | £40-60    |
| 767 | British Road Signs Country Set B                       | £40-60    |
| 768 | British Road Signs Town Set A                          | £40-60    |
| 769 | British Road Signs Town Set B                          | £40-60    |
| 770 | Road Signs (12) R47 (Export)                           | -         |
| 771 | International Road Signs                               | £90-120   |
| 772 | British Road Signs (24)                                | £200-280  |
| 773 | Traffic Signal 4-Face                                  | -         |
| 777 | Belisha Beacon   | -         |
| 778 | Road Repair Warning Boards                             | £15-20    |
| 780 | Petrol Pumps Set                                       | -         |
| 781 | Petrol Pump Station Esso tan base, red & white         | £50-70    |
| 782 | Petrol Pump Station Shell grey base, cream & green     | £50-70    |
| 783 | Petrol Pump Station BP grey base, cream & green        | £50-70    |
| 784 | Dinky Goods Train Set blue, red, yellow                | £30-35    |
| 785 | Service Station tan & red                              | £140-180  |
| 786 | Tyre Rack with Tyres green metal rack, 'Dunlop'        | £50-70    |
| 794 | Ramp for Pullmore Car Transporter                      | -         |
| 796 | Healey Sports Boat on Trailer orange trailer           | £25-30    |
| 797 | Healey Sports Boat                                     | £15-20    |
| 798 | Express Passenger Train R16                            | -         |
| 801 | Mini-USS Enterprise                                    | -         |
| 802 | Mini-Klingon Cruiser                                   | -         |
| 900 | Site Building Gift Set                                 | £800-1200 |
| 901 | Foden Diesel 8-wheel Wagon R501                        | -         |
| 902 | Foden Flat Truck R502                                  | -         |
| 903 | Foden Flat Truck with Tailboard R503                   | -         |
| 905 | Foden Flat Truck with Chains R505                      | -         |
| 908 | Mighty Antar with Transformer yellow cab, grey trailer | £550-700  |
| 911 | Guy 4-ton Lorry R511                                   | -         |
| 912 | Guy Flat Truck R512                                    | -         |
| 913 | Guy Flat Truck with Tailboard R513                     | -         |
| 914 | AEC Articulated Lorry red/grey                         |           |

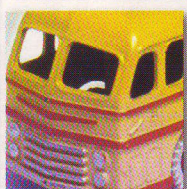
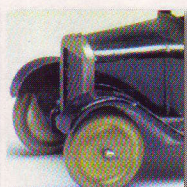


# Dinky toys

930: the Bedford Dinky pallet van was actually based on the real Dinky delivery vehicles.



|      |  |            |
|------|--|------------|
|      | back, British Road Services  | £150-175   |
| 915  | AEC with Flat Trailer orange cab/chassis, met. blue with orange, white back  | £75-80     |
| 915* | AEC with Flat Trailer white, 'Thames Board Mills'  | A          |
| 917  | Guy Van 'Spratts' R514   | -          |
| 917  | Mercedes-Benz Truck/Trailer blue/yellow/white  | £70-90     |
| 917  | Mercedes-Benz Truck/Trailer 'Munsterland' dark green, 'Münsterland'.   | £250-300   |
| 917* | Mercedes-Benz Truck 'Henry Johnson' dark green, white tilt, 'henry johnson'  | £250-300   |
| 918  | Guy Van 'Ever Ready' blue  | £220-270   |
| 919  | Guy Van 'Golden Shred' red   | £700-900   |
| 920  | Guy Warrior Van 'Heinz' red/yellow   | £1400-1900 |
| 921  | Bedford Articulated Lorry R521   | -          |
| 922  | Big Bedford Lorry R522   | -          |
| 923  | Big Bedford Van 'Heinz' red/yellow, 'Heinz' Beans Can decal  | £250-350   |
| 923  | Big Bedford Van 'Heinz' red/yellow, 'Heinz' Ketchup Bottle decal   | £1000-1500 |
| 924  | Aveling Barford Centaur Dump Truck red cab, yellow back  | £45-55     |
| 925  | Leyland Dump Truck (with tilt cab)/Leyland Tilt Cab & Heavy Duty Tipper white cab/chassis with blue roof, red back | £120-150   |
| 930  | Bedford Pallet-Jekta Van orange & cream, transfer: Dinky Toys  | £220-270   |
| 931  | Leyland Comet Lorry R531   | -          |
| 932  | Leyland Comet Wagon - Hinged T/board R532  | -          |
| 933  | Leyland Cement Wagon R533  | -          |
| 934  | Leyland Octopus Wagon yellow/green   | £200-250   |
| 934  | Leyland Octopus Wagon blue/cream   | £1300-1600 |
| 935  | Leyland Octopus Flat Truck with Chains green/grey  | £1000-1500 |
| 935  | Leyland Octopus Flat Truck with Chains blue/grey   | £1600-2000 |
| 936  | Leyland Eight-Wheeled Test Chassis red/silver  | £90-100    |
| 940  | Mercedes-Benz Truck white/red  | £35-40     |
| 941  | Foden Tanker 'Mobilgas' R504   | -          |



## Fact File

Both the BBC and ABC TV series vehicles are hugely popular with collectors at present. They present an attractive and nostalgic series.

|      |  |          |
|------|--|----------|
| 942  | Foden Tanker 'Regent' dark blue with red, white & blue tank, 'Regent'        | £350-400 |
| 943  | Leyland Octopus Tanker 'Esso' red, 'Esso'                                    | £250-300 |
| 944  | Shell-BP Fuel Tanker white with yellow                                       | £180-220 |
| 944* | 'Corn Products' Tanker white cab, black chassis, cream tank, 'Corn Products' | A        |
| 945  | A.E.C. Fuel Tanker 'Esso' white  | £60-90   |
| 945* | Lucas Oil Tanker green, 'Lucas Oil'  | £130-160 |
| 948  | Tractor-Trailer 'McLean' red cab, grey trailer                               | £140-175 |
| 949  | Wayne School Bus orange with red trim  | £150-200 |
| 950  | Foden S20 Fuel Tanker red & white, 'Burmah' or 'Shell'                       | £60-90   |
| 951  | Trailer R551   | -        |
| 952  | Vega Major Luxury Coach (electric lights) light grey                         | £70-90   |
| 953  | Continental Touring Coach turquoise with white roof                          | £250-300 |
| 954  | Fire Station red, yellow & brick   | £180-220 |
| 954  | Vega Major Luxury Coach light grey   | £70-90   |
| 955  | Fire Engine with Extending Ladder R555                                       | -        |
| 956  | Turntable Fire Escape (Bedford) red  | £100-110 |
| 956  | Turntable Fire Escape (Berliet) metallic red                                 | £140-160 |
| 956  | Turntable Fire Escape (Berliet) Falck metallic red, 'Falck'                  | £160-180 |
| 957  | Fire Services Gift Set 257, 955, 956   | £370-450 |
| 958  | Snow Plough yellow & black   | £150-200 |
| 959  | Foden Dump Truck with Bulldozer Blade red & silver                           | £80-100  |
| 960  | Albion Lorry-Mounted Concrete Mixer orange, yellow & blue                    | £70-80   |
| 961  | Blaw-Knox Bulldozer R561   | -        |
| 961  | Vega Major Luxury Coach PTT yellow with white plastic roof                   | £150-175 |
| 962  | Muir-Hill Dumper R562  | -        |
| 963  | (Blaw-Knox) Heavy Tractor R563   | -        |
| 963  | Road Grader orange & yellow  | £25-35   |
| 964  | Elevator Loader R564   | -        |
| 965  | Euclid Rear Dump Truck yellow, 'Euclid'                                      | £45-70   |
| 965  | Terex Dump Truck yellow, 'Terex'   | £160-190 |
| 966  | Marrel Multi-bucket Unit yellow with grey bucket                             | £100-120 |
| 967  | B.B.C. TV Mobile Control Room dark green                                     | £110-150 |
| 967  | Muir Hill Loader and Trencher yellow & orange                                | £25-35   |
| 968  | B.B.C. TV Roving Eye Vehicle dark green                                      | £110-160 |
| 969  | B.B.C. TV Extending Mast Vehicle dark green                                  | £125-160 |
| 970  | Jones Fleetmaster Cantilever Crane red / black, yellow or metallic red       | £60-80   |
| 971  | Coles Mobile Crane R571  | -        |
| 972  | Coles 20-ton Lorry Mounted Crane orange lorry, yellow crane                  | £70-100  |
| 973  | Goods Yard Crane R752  | -        |
| 973  | Eaton Yale Articulated Tractor Shovel yellow & orange                        | £25-35   |



|      |  |            |
|------|--|------------|
| 974  | A.E.C. Hoynor Car Transporter<br>blue/yellow & red, 'Silcock & Colling',<br>white, yellow & orange             | £55-80     |
| 975  | Ruston Bucyrus Excavator<br>red, yellow & grey   | £200-260   |
| 976  | Michigan 180 III Tractor Dozer<br>yellow with red parts.   | £25-35     |
| 977  | Servicing Platform Vehicle<br>(commercial) cream truck with red<br>beanstalk                                   | £140-175   |
| 977  | Shovel Dozer yellow & red  | £25-35     |
| 978  | Refuse Wagon metallic green,<br>green, yellow or lime green  | £45-70     |
| 979  | Racehorse Transpor light grey and<br>yellow, 'Newmarket'   | £270-320   |
| 980  | Horsebox R581 (US only)  | -          |
| 980  | Coles Hydra Truck 150T<br>yellow or orange with black wings  | £35-45     |
| 981  | British Railways Horsebox R581   | -          |
| 982  | Pullmore Car Transporter R582  | -          |
| 983  | Car Carrier and Trailer 984, 985   | £220-270   |
| 984  | Car Carrier red / grey,<br>'Dinky Autoservice'   | £130-160   |
| 984  | Atlas Digger yellow, red & black   | £35-45     |
| 985  | Trailer for Car Carrier red/grey,<br>'Dinky Autoservice'   | £40-70     |
| 986  | Mighty Antar Low Loader and<br>Propeller red tractor, grey trailer   | £200-280   |
| 987  | A.B.C. TV Control Room<br>light blue & grey, A.B.C- TV   | £170-200   |
| 988  | A.B.C.TV Transmitter Van<br>light blue & grey, A.B.C-TV  | £190-220   |
| 989  | Car Carrier (Auto Transporters)<br>yellow / grey back  | £1100-1400 |
| 990  | Pullmore Car Transporter with four<br>cars 154, 156, 161, 162, 982   | £1250-1600 |
| 991  | AEC Tanker R591  | -          |
| 992  | Avro Vulcan Delta Wing Bomber<br>silver, R749  | £1750-2250 |
| 994  | Loading Ramp for Pullmore<br>Transporter light blue, R794  | £15-20     |
| 997  | Caravelle SE210 Airliner silver with<br>white, 'Air France' 'F-BGNY'   | £225-275   |
| 998  | Bristol Britannia Airliner<br>silver/white, 'Canadian Pacific',<br>blue lines on fuselage                      | £225-275   |
| 998  | Bristol Britannia Airliner<br>silver/white or met. grey/white,<br>'Canadian Pacific', red lines on<br>fuselage | £200-250   |
| 999  | D.H. Comet Jet Airliner R702   | -          |
| 1001 | Station Staff (set of 6)<br>OO gauge blue, R051  | £70-90     |
| 1003 | Passengers (set of 6)  |            |



172: the ungainly lines of this Studebaker were well captured.

|      |                                  |         |
|------|----------------------------------|---------|
|      | OO gauge various colours, R053   | £70-90  |
| 2162 | Ford Capri metallic blue & black | £70-90  |
| 2214 | Ford Capri Rally Car red & black | £90-110 |
| 2253 | Ford Capri Police Car white      | £90-110 |

#### Hong Kong Production

|        |   |          |
|--------|---|----------|
| 57/001 | Buick Riviera Coupé blue, white roof                | £75-95   |
| 57/002 | Chevrolet Corvair Monza Coupé<br>red, black roof    | £90-110  |
| 57/003 | Chevrolet Impala yellow, white roof                 | £75-95   |
| 57/003 | Chevrolet Impala yellow                             | £110-130 |
| 57/004 | Oldsmobile 88 white, blue roof                      | £100-130 |
| 57/005 | Ford Thunderbird blue, white roof                   | £90-110  |
| 57/006 | Rambler Classic Station Wagon<br>green, silver trim | £75-95   |

#### Dinky Action Kits

|      |  |         |
|------|--|---------|
| 1001 | Rolls Royce Phantom V Limousine<br>blue paint                    | £15-20  |
| 1002 | Volvo 1800S yellow paint   | £15-20  |
| 1003 | Volkswagen 1300 Sedan red paint                                  | £15-20  |
| 1004 | Ford Escort Police Car<br>blue paint, transfers: Police          | £25-30  |
| 1006 | Ford Mexico red paint,<br>Mexico stripes                         | £20-25  |
| 1007 | Jensen FF blue paint   | £20-25  |
| 1008 | Mercedes-Benz 600 red paint                                      | £15-20  |
| 1009 | Lotus F.1 Racing Car<br>green paint, transfers: 'Gold Leaf'      | £10-15  |
| 1012 | Ferrari 312-B2 red paint, decals:<br>'Shell'                     | £10-15  |
| 1014 | Beach Buggy blue paint   | £10-15  |
| 1017 | Routemaster Bus red paint,<br>transfers: 'Esso' Safetygrip Tyres | £20-25  |
| 1018 | Atlantean Bus white, transfers:<br>'National'                    | £20-25  |
| 1023 | Single Decker Bus green paint,<br>transfers: Green Line          | £20-25  |
| 1025 | Ford Transit Van red paint,<br>transfers: Avis                   | £20-30  |
| 1027 | Lunar Roving Vehicle blue paint                                  | £10-20  |
| 1029 | Ford D800 Tipper Truck green paint                               | £20-30  |
| 1030 | Land Rover Breakdown<br>Crane white paint                        | £15-20  |
| 1032 | Army Land Rover military green paint                             | £10-15  |
| 1033 | U.S. Jeep military green paint                                   | £10-15  |
| 1034 | Mobile Gun military green paint                                  | £10-15  |
| 1035 | Striker Anti-Tank Vehicle<br>military green paint                | £10-15  |
| 1036 | Leopard Tank military green paint                                | £10-15  |
| 1037 | Chieftain Tank military green paint                              | £10-15  |
| 1038 | Scorpion Tank military green paint                               | £10-15  |
| 1040 | Sea King Helicopter white<br>(& orange?)USAF markings            | £25-35  |
| 1041 | Hawker Hurricane Mk11C<br>RAF markings                           | £25-30  |
| 1042 | Spitfire Mk II RAF markings                                      | £25-30  |
| 1043 | S.E.P.E.C.A.T. Jaguar RAF markings                               | £10-15  |
| 1044 | Messerschmitt B.F.109E<br>Luftwaffe markings                     | £20-30  |
| 1045 | Multi-Role Combat Aircraft                                       | £10-15  |
| 1050 | Motor Patrol Boat  | £10-15  |
| 2162 | Ford Capri metallic blue & black                                 | £70-90  |
| 2214 | Ford Capri Rally Car red & black                                 | £90-110 |
| 2253 | Ford Capri Police Car white                                      | £90-110 |